



A Guidebook On

**WORKERS' COMPENSATION LAW
FOR EDUCATIONAL ENTITIES**

(2025 EDITION)

Laughlin, Falbo, Levy & Moresi LLP

www.lflm.com

Mailing Address

Send all checks and case handling/file-related materials/correspondence to:

One Capitol Mall, Suite 400 Sacramento, CA 95814

Administration/Concord

1001 Galaxy Way
Suite 200
Concord, CA 94560
T: (925) 499-4999
F: (925) 348-9710

Fresno

575 E. Locust Avenue
Suite 311
Fresno, CA 93720
T: (559) 431-4900
F: (559) 431-4046

Los Angeles

207 N. Goode Avenue
Suite 450
Glendale, CA 91203
T: (818) 638-8200
F: (818) 479-7548

Oakland

505 14th Street
Suite 1210
Oakland, CA 94612
T: (510) 628-0496
F: (510) 628-0499

Orange County

2100 W. Orangewood Avenue
Suite 110
Orange, CA 92868
T: (714) 385-9400
F: (714) 385-9055

Redding

250 Hemsted Drive
Suite 101
Redding, CA 96002
T: (530) 222-0268
F: (530) 222-5705

Sacramento

One Capitol Mall
Suite 400
Sacramento, CA 95814
T: (916) 441-6045
F: (916) 441-7067

San Bernardino

621 E. Carnegie Drive
Suite 260
San Bernardino, CA 92408
T: (909) 890-2265
F: (909) 890-2377

San Diego

600 B Street
Suite 2300
San Diego, CA 92101
T: (619) 233-9898
F: (619) 233-6862

San Francisco

255 California Street
Suite 850
San Francisco, CA 94111
T: (415) 781-6676
F: (415) 781-6823

San Jose

1798 Technology Drive
Suite 120
San Jose, CA 95110
T: (408) 286-8801
F: (408) 286-1935

Printed by: Laughlin, Falbo, Levy & Moresi LLP © July 2016

Revised: January 2017; January 2018; January 2019; January 2020; January 2021; January 2022; January 2023; January 2024; January 2025

As of its printing date, this guidebook presents the most accurate and up to date information. However, appellate court decisions and statutory amendments result in an ever changing picture. We call this a “guidebook” because that is what it is intended to be. It is not comprehensive enough to provide all the answers. What was true yesterday may not be true today or tomorrow.

FOREWORD

The law offices of Laughlin, Falbo, Levy & Moresi LLP represent employers, insurers, self-insured entities and School Districts defending disputed workers' compensation claims. We provide advice, perform discovery, negotiate resolution of claims, and offer representation before the Workers' Compensation Appeals Board. Over the years, Laughlin, Falbo, Levy & Moresi LLP has supplemented this emphasis with several complimentary practice areas, including insurance coverage, insurance litigation, and civil litigation.

Today, Laughlin, Falbo, Levy & Moresi LLP has offices in 11 California cities and a legal staff of more than 110 attorneys. We represent School Districts in all of our locations. Below is a list of our attorneys committed to servicing School District clients.

Fresno

John Orman**
Jesus Pereda
Shelley Quinn**
Kristin Siemens

Los Angeles

Demetra Johal**
Kevin Kim
Jennifer Lee
Loren Meador**
Stephen Nakata**
Jessica Neal

Oakland/Concord

Russell Fung
Susan Hastings**
Brian Hull
Vicki Lindquist**
Emma Nelson-Munson
John Petrouski
Jim Pettibone*
Crystal Tappin**
Erin Walker**

Orange County

Omar Behnawa**
Stan Escalante
Danny Gamulao**
Nick Pavlovich**
Matthew Schell

Redding

Glenn Olsen

Sacramento

John Geyer**
Robert Javan
Bruce Jennett**
Hector Jorin
Jonathan Liff**
Alisha Pritchard
Ilona Rincon
Jim Swenson

San Bernardino

Robert Guttman**
Carroll Wheatley**

San Diego

Scott Haustein**
Marc Leibowitz**
Corbin McVeigh
Michelle Sebring**
Trisha Toyne
Nicholas Valenzuela

San Francisco

Donald Applegate
Kevin Calegari**
Nat Cordellos**
Brian Egan*
Jake Falbo**
Tanya Johnson
Michael Kvyat
Matthew Lee
Kate Lozano**
Jesus Mendoza**
Sean Monaghan**

San Jose

Mark Filippi**
Kathleen Foy**
Connie Jones
Athena Niayesh
Travis Sams**
Johnny Shiu
Laurence Sjauwfoekloy**

**Partner

* Of Counsel

*A special thanks to all of our Risk Managers, Administrators and Insurance Carriers
who collaborate with us to facilitate and resolve the unique issues
faced by educational entities.*

TABLE OF CONTENTS

I. The Education Code's Unique Employment Relationships

A.	Certificated Employees	1
B.	Classified Employees	1
C.	Students	1
D.	Volunteers	1
E.	Parent Teacher Association (PTA)	2
F.	Independent Contractors	2
G.	Non-Profit Workers	2

II. Injuries Arising Out of Employment & In The Course of Employment (AOE/COE)

A.	The Definition of an Industrial Injury	3 – 4
B.	Special Situations	4 – 7
1.	Personal Comfort and Convenience	4
2.	Lunch and Coffee Breaks	4
3.	Bunkhouse Rule	4
4.	Proximate Cause	4
5.	Intoxication	4
6.	Self-Inflicted Injury	4
7.	Suicide	5
8.	Initial Physical Aggressor	5
9.	Recreational, Social and Athletic Activities	5
10.	Felonies	5
11.	Injuries After a Firing or Lay-Off	5 – 6
12.	Commute Injuries (Going and Coming Rule)	6
13.	Psychiatric Injuries	6
14.	COVID-19 Injuries	7
C.	Presumptions	8 – 11
1.	Burden of Proof	8
2.	Safety Officers Entitled to Certain Presumptions	8
3.	What is a Presumption?	8
4.	Why do we have Presumptions?	8
5.	Types of Presumptions	8 – 10
6.	UC & CSU Personnel	10
7.	Duration of Presumptions	10
8.	Rebutting Presumptions	11

III. Benefits

A.	Workers' Compensation Benefits	12 – 23
1.	Medical Treatment	12 – 15
2.	Temporary Disability Benefits	15 – 20
a.	Education Code Benefits	
b.	Other Issues	
3.	Permanent Disability Benefits	20 – 21
4.	Apportionment of Permanent Disability	21
5.	Vocational Rehabilitation Benefits	21 – 22
6.	Supplemental Job Displacement Vouchers And the Interactive Process	22 – 23
7.	Dependency (Death) Benefits	23
B.	Retirement Benefits	24 – 27
1.	Certificated Employees	24 – 25
2.	Classified Employees	26 – 27
3.	School Safety Employees – Police & Fire	27

IV.	Penalties	
A.	Serious and Willful Misconduct (Labor Code §§4551 and 4553)	28 – 29
B.	Employer Discrimination Under Labor Code §132(a)	30
C.	Miscellaneous Penalty Provisions	30 – 31
V.	Claims Handling	
A.	Teamwork	32
B.	Early Employer Investigation	32 – 33
C.	Continuing Employer Involvement	33
D.	Key Personnel/Special Circumstances	33
E.	Mistakes to Avoid	34 – 35
VI.	Commonly Used Forms	
A.	DWC-1 Workers’ Compensation Claim Form	36
B.	Form 5020 – Employer’s Report of Occupational Injury or Illness	36
C.	Form 5021 – Doctor’s First Report of Occupational Injury or Illness	36
D.	Application for Adjudication of Claim	36
E.	Notice Regarding Temporary Disability Benefits	36 – 37
F.	Notice Regarding Permanent Disability Benefits Denial	37
G.	Notice Regarding Delay of Workers’ Compensation Benefit	37
H.	Notice Regarding Denial of Workers’ Compensation Benefit	37
I.	Notice Regarding Indemnity Benefits Payment Change	37
J.	DWC Form IMR – Application for Independent Medical Review	37
K.	DWC Form RFA – Request for Authorization for Medical Treatment	38
L.	DWC Notices of Offer of Regular Work and Modified or Alternative Work	38
M.	DWC Supplemental Job Displacement Vouchers	38
VII.	Tables & Charts	
	Table I: Evidentiary Presumptions for Safety Workers Only – Under Labor Code §§3212-3213.2	39
	Table II: Temporary Disability Benefits	40
	Table III: Permanent Partial Disability: Minimum & Maximum Rates	41
	Table IV: Death Benefits Payable for Total and Partial Dependency	42
	Table V: Flow Chart for Education Code Benefits - §§44830-45197	43
	Table VI: COVID-19 Claim Flowchart	44 – 47

SECTION I

THE EDUCATION CODE'S UNIQUE EMPLOYMENT RELATIONSHIPS

I.

THE EDUCATION CODE'S UNIQUE EMPLOYMENT RELATIONSHIPS

California Education Code §44000 *et seq.* and Labor Code §3350 through §3371 provide specific designations for School District employees which govern the delivery of Education Code and workers' compensation benefits. Some of the more common designations of School District employees whose claims you are likely to encounter are discussed below.

A. Certificated Employees

Certificated employees of School Districts are those employees required to hold a state certificate or credential and include teachers, supervisory personnel, and administrators. *San Juan Teachers Ass'n. v. San Juan Unified Sch. Dist.* (1974) 44 Cal.App.3d 232.

B. Classified Employees

Classified employees of School Districts are all employees other than those required to hold a state certificate or credential. *San Juan Teachers Ass'n. v. San Juan Unified Sch. Dist.* (1974) 44 Cal.App.3d 232.

C. Students

Students participating in work experience or vocational education programs are employees of the School District or County Superintendent unless the student is being paid a cash wage or salary for the work by the employer, or unless the person or firm under whom the persons are receiving work experience or occupational training elects to provide workers' compensation insurance (Labor Code §3368 and Education Code §51769).

In the cases of apprentice and/or student teacher interns, there is generally a contract or Memorandum of Understanding between the college or university the student attends and the School District where the student teaching is done which contains a provision specifying which entity will provide workers' compensation insurance. In certain circumstances there may be joint and several liability.

D. Volunteers

School District volunteers are covered for workers' compensation if the County Superintendent or District Board adopts a resolution designating those volunteers as employees (Labor Code §3364.5). There is a "catch all" provision in Labor Code §3363.5 allowing public agencies to adopt resolutions designating volunteers as employees for purposes of workers' compensation benefits. Volunteers are defined as persons receiving no remuneration other than meals, transportation, lodging, and reimbursement for incidental expenses.

E. Parent Teacher Association (PTA)

A PTA that is chartered through the California State PTA has workers' compensation insurance through that entity. The workers' compensation liability for any other parent/teacher organization will have to be determined on a case by case basis.

F. Independent Contractors

Notwithstanding the above sections, individuals who are found to be independent contractors while performing their duties when injured are not deemed employees. An independent contractor is defined by Labor Code §3353 as:

...any person who renders service for a specified recompense for a specified result, under the control of his principal as to the result of his work only, and not as to the means by which such result is accomplished.

The "burden of proof" (discussed in Section II, part C of this guidebook) to establish that a worker is an independent contractor rests on the employer, as now codified through AB 5 and its reference to the *Dynamex Operations West, Inc. v. Superior Court of Los Angeles (Dynamex)* (2018) 4 Cal.5th 903, "ABC test." The *Dynamex* "ABC test" mandates that a worker is an employee unless free from the control and direction of the hiring entity in the performance of the work, the work performed is outside the usual course of the hiring entity's business, and the worker is customarily engaged in an independently established trade, occupation, or business of the same nature as that involved in the work performed. This is a difficult determination, and you may wish to seek legal advice before denying a claim based on an individual's alleged status as an independent contractor.

G. Non-Profit Workers

You may receive offers for free or subsidized workers from a non-profit agency. Often the hope is to enhance the workers' training and eventual employability after gaining some job experience. Green Thumb, Inc. for example provides this service for senior citizens. Often there is an option for the non-profit to cover the worker. If so, we recommend you opt for such coverage to keep these workers who have not gone through your hiring process from affecting your own workers' compensation experience. We recommend you have a clear agreement that all workers' compensation coverage will be provided by the non-profit before you accept any services. In summary you should carefully consider the terms of the agreement and whether the workers' compensation and general liability exposures fit your agency's risk management protocols.

SECTION II

INJURIES ARISING OUT OF EMPLOYMENT & IN THE COURSE OF EMPLOYMENT (AOE/COE)

II.

INJURIES ARISING OUT OF EMPLOYMENT **& IN THE COURSE OF EMPLOYMENT** **(AOE/COE)**

A. The Definition of an Industrial Injury

In order for the conditions of compensation to exist (in other words, the employer pays), an industrial injury must occur. Only industrial injuries are compensated under California workers' compensation laws. An "industrial injury" is an injury or illness which arises out of a worker's employment, although in most circumstances it need only be shown that the worker's employment contributed to the condition - not that it was the sole cause. Additionally, the injury must occur in the "course of employment" which requires to the time, place and manner if the event be industrially related.

There are three ways in which an industrial injury can occur. The simplest is a "specific injury", i.e., a specific event such as a fall or other such occurrence that results in a physical or mental condition.

The second variety is called an occupational disease. A contagious air borne disease for instance is compensable if it is contracted as a result of an exposure that is peculiar to an employment or encountered because of the employment. Examples of an occupational disease often encountered in School Districts include toxic exposures such as mold, asbestos, lead or cancer from exposure to certain carcinogens as well as exposure to contagious diseases.

Closely akin to and frequently indistinguishable from occupational diseases are the third type of industrial event - cumulative injuries. By statute, these types of injuries are defined as "repetitive mentally or physically traumatic activities", the combined effect of which causes disability or need for medical treatment (Labor Code §3208.1).

Examples of cumulative injuries include back or upper extremity disabilities resulting from the stress and strain of repetitive movements or acoustical trauma resulting in hearing loss. It is not the one individual act by itself that causes the damage/injury, but rather in the aggregate, the activities over an extended period of time (the cumulative effect), produce a gradual onset and deterioration to the point where the condition becomes symptomatic and medical care becomes necessary.

Disability resulting from aggravation of a pre-existing condition or disease by employment activities (such as stress) also entitles the worker to compensation. Urological and digestive issues are examples of this type of injury. It is not necessary that the work precipitating the disability be of an unusual nature; there need only be a causal connection between the strain and the disabling event.

Damage to artificial limbs, dentures, hearing aids, eye glasses and medical braces are considered injuries, however physical damage to eye glasses and hearing aids will not be compensated "unless injury to them is incident to an injury causing disability" (Labor Code §3208). Damage

to clothing and other personal property is not covered under workers' compensation, but may be compensated under the employer's statutory obligation to indemnify the employee for a loss in direct consequence of the discharge of employment duties (Labor Code §2802).

B. Special Situations

1. Personal Comfort and Convenience

During the work day, a worker is likely to pause for a drink of water, get some fresh air, visit the lavatory, or to engage in other acts of comfort and convenience. Although none of these activities are the services for which the employee was hired, they are incidental to the employment and impliedly within its contemplation. Injuries sustained while engaged in such acts arise out of and in the course of the employment.

2. Lunch and Coffee Breaks

Lunch and coffee breaks on the employer's premises are in the course of employment. Injuries that occur away from the employer's premises during a lunch break generally do not require payment of compensation. (See Section II, Part B-12, Going and Coming Rule) There are many exceptions to this rule, such that off premises coffee breaks can be in the course of employment if they have become customary and have the implied approval of the employer.

3. Bunkhouse Rule

The employer's premises include living quarters furnished to the employee if the employment contract contemplates, or the nature of the work requires the employee to live on the premises. Pursuant to what is known as the "Bunkhouse Rule", the worker is considered to be performing services incidental to the employment whenever making reasonable use of the premises.

4. Proximate Cause

Compensation is payable if the injury has been proximately caused by the employment. Proximate cause exists when the employment brings the worker within the range of the danger which causes the injury. The employment need not be the sole cause of the danger which causes the injury; it need only be a substantial contributing cause. Examples of compensable injuries or conditions include: an injury sustained in a vehicle collision on the way to treatment for an industrial injury or en route to or from an educational training or seminar; an injury incurred while delivering a return to work slip to the employer after recovery from an industrial injury; drug addiction from pain medication prescribed for the industrial injury; a new injury caused by pain and weakness from the industrial injury.

5. Intoxication

No compensation is payable if the injury has been caused by the employee's intoxication. The employer must prove that the intoxication was the proximate cause of the injury. An employer who condones or encourages the drinking may be stopped from asserting the intoxication defense (i.e., office parties where the alcohol is provided or condoned).

6. Self-Inflicted Injury

An intentionally self-inflicted injury is not compensable.

7. Suicide

Compensation paid in the form of statutory death benefits is not payable if the death was willfully and deliberately caused by the employee. The employer must, however, show that the employee voluntarily committed suicide and also that he could have resisted the impulse to commit the act. If expert testimony shows that without the industrial injury, there would have been no suicide, the injury is a proximate cause of the death. A death by suicide is also compensable when the pain resulting from an industrial injury has caused the employee to feel that death would afford the only relief unless it appears that the employee could have resisted the impulse to act.

8. Initial Physical Aggressor

Work puts employees under strains and fatigue that create frictions and sometimes cause altercations. An injury sustained in a fight that grows out of a dispute over the employment may be compensable, whether inflicted by a supervisor, fellow employee or a subordinate. Conversely, an injury sustained in an altercation engendered by personal animosity wholly unrelated to the employment does not arise out of the employment. There is no recovery if the worker who claims benefits for an injury sustained in an altercation was the initial physical aggressor. The person making the first physical contact is not necessarily the initial physical aggressor. A worker who approaches a fellow worker in such a manner that the fellow worker is placed in reasonable fear of bodily harm is the initial physical aggressor even though he does not strike the first blow. Thus, the initial physical aggressor is the first person engaging in conduct amounting to the legal definition of an “assault”.

9. Recreational, Social and Athletic Activities

There is no recovery for injuries arising out of voluntary participation in off-duty recreational, social or athletic activity that is not a part of the employee’s work related duties, unless the activity is a reasonable expectation of employment or is expressly or impliedly required by the employment. However, activities of a worker who is hired to engage in recreational or athletic activities are in the course of employment. Some commentators have suggested that when an employee furnishes equipment for the activity, or has an interest in the activity, for example in relation to advertising the business, a compensable injury is more likely to be found. In any instance, an employer should post notice pursuant to Title 8, regulation 9881, which includes advice that the employer may not be responsible for compensation because of an injury due to the employee's voluntary participation in any off-duty recreational, social, or athletic activity that is not a part of the employee's work-related duties.

10. Felonies

Injuries sustained while in the commission of a felony do not result in payment of compensation by the employer.

11. Injuries After a Firing or Lay-Off

Injuries claimed after a notice of termination or lay-off (including a voluntary lay-off) may or may not be entitled to compensation depending upon when the notice of termination or lay-off was issued, and a number of other criteria [Labor Code §3600a(10)]. There are additional elements of proof that the employee must produce if

the claimed injury is of a psychiatric nature (see Labor Code §3208.3 - discussion following in Part 13). It is good practice to provide written notice of termination or lay-off to the employee, and to keep a copy of the notice in the employee's personnel file for easy documentation. The effective date of the termination or lay-off must be within 60 days of the notice to insure this potential defense.

12. Commute Injuries (Going and Coming Rule)

The "Going and Coming Rule" precludes compensation for injuries sustained en route to and from work, in other words, during a normal commute. The rule has numerous complex exceptions. Two examples of exception are a) the employer provides or contributes to the cost of the transportation, or b) the employee is on a special mission for the employer. A basic statement of the rule is as follows: "travel to and from work is deemed to be in the course of employment unless it is an ordinary commute to a fixed place at a fixed time." Injuries suffered during a commute are compensable if the employment subjected the worker to a special risk or there are special circumstances. For example, if a worker is required to participate in off-site training an injury during such travel is compensable as this is a "special mission" even if the travel is uncompensated.

13. Psychiatric Injuries

Sweeping and drastic changes were implemented by the Legislature in 1993 with respect to compensation payable for psychiatric injuries. To be compensable, a psychiatric injury must: a) cause disability or need for medical treatment; b) be diagnosed pursuant to procedures promulgated by the Industrial Medical Council; c) have been caused by actual events of employment which are predominant (more than 50%) as to all causes combined of the psychiatric injury; d) not have been substantially caused by a lawful non-discriminatory good faith personnel action. If, however, the injured worker was the victim of a violent act or was directly exposed to a significant violent act, the actual events of the employment need only be a substantial cause (i.e., 35% to 40%). There is also a requirement that the worker must have been employed for six months before the injury, unless it was caused by a sudden and extraordinary condition. Additional criteria for the payment of compensation exist if the psychiatric claim is filed after a notice of termination or lay-off. (See Section II, part B-11).

Effective January 1, 2020, specified firefighters and peace officers diagnosed with post-traumatic stress disorder are rebuttably presumed to have sustained an industrial injury. While the statute does not specify the evidence necessary to evaluate rebuttal of the presumption, it was enacted with the clear goal of circumventing the above-stated ordinary thresholds to establish compensability for a psychiatric injury. The statute defines injury as post-traumatic stress disorder that is diagnosed according to the most recent edition of the Diagnostic and Statistical Manual of Mental Disorders published by the American Psychiatric Association. The post-traumatic stress disorder must develop or manifest during service of the department or unit, but the presumption is extended by time of service. Compensation for these post-traumatic stress disorder claims includes full hospital, surgical, medical treatment, disability indemnity, and death benefits. The Firm will continue to monitor developments on the interpretation of the statute. The laws of apportionment apply to permanent disability for presumptive psychiatric injuries.

14. COVID-19 Injuries

In direct response to the COVID-19 pandemic, the Legislature enacted new Labor Code sections that create presumptions for public safety and health employees and others that work at a specific place of employment that sustains an outbreak of COVID-19, as defined by statute. The laws cover the time period from March 19, 2020 through the date of enactment and continuing through self-repeal on January 1, 2024, apply to the burden of proof on causation and do not negate the rules of apportionment. The testing methods necessary vary by section. Review the text of each section carefully to determine eligibility, length of investigation period, potential reporting requirements and next steps in handling. See section “C” presumptions for additional information.

Labor Code §3212.86 created a rebuttable presumption that employees diagnosed with COVID-19 within 14 days of performing labor or services at the employee’s place of employment and at the employer’s direction contracted the virus at work if that work occurred on or after March 19, 2020 and on or before July 5, 2020. There are only 30 days to investigate the claim notwithstanding Labor Code §5402. Medical qualifications for diagnosis, testing method and timing are statute specific. Review the text and consult with counsel before accepting the claim.

Labor Code §3212.87 created a rebuttable presumption that certain public safety and health care employees who test positive for COVID-19 contracted the virus at work. The presumption applies to employees diagnosed within 14 days of performing labor or services at the employee’s place of employment at the employer’s direction if that work occurred on or after July 6, 2020. Like §3212.86, there are only 30 days to investigate the claim notwithstanding Labor Code §5402. Medical qualifications for diagnosis, testing method and timing are statute specific and more restrictive than §3212.86. Review the text and consult with counsel before accepting the claim.

Labor Code §3212.88 created a rebuttable presumption that persons who tested positive for COVID-19 during an outbreak at the employee’s specific place of employment, and whose employer has five or more employees. Outbreak is defined by the statute and all employers with five or more employees are subject to this rule. The presumption applies to employees diagnosed within 14 days of performing labor or services at the employee’s place of employment at the employer’s direction if that occurred on or July 6, 2020. There are only 45 days to investigate the claim notwithstanding Labor Code §5402. Attempts at mitigation may rebut the presumption, including, but not limited to, measures in place to reduce potential transmission of COVID-19 in the employee’s place of employment and risks of COVID-19 infection that are not work-related. The statute created affirmative reporting requirements that involve the employer and the claims administrator and failure to comply may carry administrative penalties. Medical qualifications for diagnosis, testing and timing are statute specific. Review the text and consult with counsel before accepting the claim. The laws of apportionment apply to permanent disability for presumptive COVID-19 injuries.

C. Presumptions

1. **Burden of Proof**

In a normal case of industrial injury, the employee has the burden of proof to show that an injury/disability arose out of and in the course of employment (Labor Code §§3600, 3202.5):

- a. The employee must meet his burden by a “preponderance of the evidence.”
- b. “Preponderance of the evidence” is defined as evidence which weighed with that opposed to it, has more convincing force and the greater probability of truth.

2. **Safety Officers Entitled to Certain Presumptions**

Certain safety officers, such as police officers and firefighters, have the benefit of a presumption of work injury representing certain medical conditions. These medical conditions are outlined in several statutes, Labor Code §3212 through §3213.2 (see Table 1). More detail about these medical conditions will be covered in Part C-5 of this Section.

- a. These presumptions do not apply to all public safety officers – the safety job title must be specifically covered by statutes.

3. **What is a Presumption?**

- a. Simply put, a presumption is an assumption of fact the law requires to be made from another fact or group of facts formed in the case (Evidence Code §600 (a)). These statutorily enacted facts can either be “conclusive”, meaning that you cannot dispute them, or they are “rebuttable”, which means that you can produce evidence to overcome what you are told you must assume to be true.
- b. The presumptions we are dealing with in these statutes are rebuttable.

4. **Why do we have Presumptions?**

- a. To provide additional compensation to certain public employees who provide vital and hazardous services by easing their burden of proof - it’s a benefit to them, conferred by the legislature, to which other employees are not entitled.
- b. This additional compensation is delivered by easing the burden of proof that the employee has to show and, in fact, actually shifts this burden of proof to the employer to disprove the statutorily enacted fact.

5. **Types of Presumptions (See Table I)**

- a. The presumption for certain illnesses is such that the specified illness set forth in the statutes arose out of the employment relationship if it **developed** or **manifested itself** during the **employment period**.
 - 1) Litigation over the terms “developed”, “manifested itself” and “employment period” abound.

2) The following illnesses are presumed to have been attributable to the employment for certain specifically enumerated employees.

a) Heart trouble

This has a rather expansive term. In general, it encompasses any affliction to, or additional exertion of, the heart caused directly by that organ or the system to which it belongs, or to it through interaction with other afflicted areas of the body, which might be produced by the stress and strain of the covered employment.

(1) Examples: the presumption has been applied to a firefighter's aortic valve disease, to acute and chronic arteriosclerotic occlusive disease in the iliac arteries, to a heart attack caused by valvular lesions due to rheumatic fever, to atherosclerotic heart disease, to cardiomyopathy, and to coronary insufficiency.

(2) Stroke (CVA's): **no presumption.**

b) Pneumonia

c) Hernia

d) Tuberculosis

e) Cancer

(1) This presumption applies when the cancer develops or manifests itself during a period while the member is in the service of the department. For injuries filed after 1-1-97, this statute provides that cancer or leukemia is a presumed injury that may only be controverted by evidence showing the primary site of cancer has been established, and the carcinogen to which the claimant has demonstrated exposure is not reasonably linked to the disabling cancer. Specifically included as a cancer condition is leukemia. This provision shifts the burden of proof to the defendants to disprove a presumed injury once the firefighter/peace officer establishes the presence of a cancer and an exposure to a known carcinogen. In the case of *Joy v. WCAB* (2009) 74 CCC 871, the WCAB held that a reserve police officer's thyroid cancer, having a latency of 10 years, manifested when the applicant was a Penal Code §830.6 "reserve officer" not covered by the presumption. Peace officers covered by the cancer presumption only include those engaging in active law enforcement and sworn under Penal Code §§830.1, 830.2 (a), and 830.37 (a). Based upon a latency finding defendants proved the presumption did not apply, and further the latency proved the absence of a reasonable link between his later employment exposure as a regular City police officer and the thyroid cancer. In the same case however, Joy suffered a separate unrelated cancer in the form of

Hodgkin's disease during a period when he was a regular City police officer under Penal Code §830.1, and therefore he was entitled to the presumption, and found the Hodgkin's disease compensable.

- f) Low back where a police “duty belt” is a condition of employment
- g) Blood borne diseases
- h) Meningitis
- i) Biochemical exposure
- j) Lyme Disease
- k) Methicillin-resistant staphylococcus aureus skin infection (MRSA)
- l) Post-Traumatic Stress Disorder (PTSD)
This presumption begins effective 1/1/2020 and sunsets on 1/1/2029 unless extended by the Legislature.
- m) COVID-19
All COVID-19 presumption statutes sunset on January 1, 2023 or on repeal, whichever occurs first.

6. UC & CSU Personnel

For statutory reference applicable to University of California firefighters and law enforcement officers, see Table I. For statutory reference applicable to California State University Police Officers, see Table I.

7. Duration of Presumptions (Labor Code §§3212, et. seq.)

- a. Toward the beginning of this section, the statement is made that the presumption applies if the disease manifests itself during the employment period - what is the employment period?
 - 1) It can extend beyond the **last date worked** in the covered capacity as opposed to the effective date of retirement.
 - 2) If the safety job title is specifically enumerated by statute, the presumption is extended post-active service up to a maximum of 60 months (120 months for cancer, Labor Code §3212.1 amended in 2010) from the last day actually worked. The extension is for each full year of service a three month extension is granted. In order to get the maximum 60 months (120 months for cancer), the officer must have 20 years of safety service (40 years for the cancer maximum). Less than 20 years service provides three months for every year of safety service; so as an example, five years service permits a post-service extension of 15 months, 10 years service provides 30 months and 15 years service provides 45 months.

Exception: Under Labor Code §3212.8 the MRSA presumption extends only 90 days from the last day actually worked. COVID-19 presumptions extend to diagnosis within 14 days of performing labor or services at the employee’s place of employment at the employer’s direction.

8. Rebutting Presumptions

- a. Must a claim be accepted when the treating physician makes a diagnosis of one of the presumed compensable illnesses? No.
- b. Should a medical opinion be obtained? Yes, not so much for causation, although it must be addressed to a certain degree to rebut the presumption, but also to confirm the diagnosis because only the specifically identifiable illnesses are presumed to be compensable.
 - 1) Is an opinion from a medical expert (PQME/AME) that “heart trouble” was not caused by the employee’s work as a safety officer sufficient to rebut presumption? No. The opinions of the expert must establish a cause other than work to rebut presumption, that is, medical opinion that heart trouble such as a heart attack is of unknown cause does not rebut the presumption. However, a medical opinion that cardiomyopathy (enlargement of the heart muscle) was heart trouble but was caused by non-industrial alcoholism may rebut the presumption.
- c. Failure to properly rebut presumption can result in penalties being assessed. Labor Code §5414.3, effective January 1, 2023, increased potential penalties for the unreasonable rejection of claims covered by the Labor Code §§ 3212 to 3213.2 presumptions to up to \$50,000.
- d. “Anti-attribution clause”
 - 1) No hernia, heart trouble, pneumonia, or blood borne infectious disease that develops or manifests itself during the period the member is in service may be attributed to any disease existing prior to that development or manifestation (Labor Code §3212) - however, a contemporaneous non-work related event or set of circumstances can sufficiently rebut this presumption. This presumption is called the anti-attribution clause.
 - 2) By comparison other presumptions like the cancer presumption do not include an anti-attribution clause allowing rebuttal by a broader scope of evidence, which includes prior diseases or medical conditions that generally are not admissible evidence in presumptions which do include the anti-attribution clause such as “heart trouble”. Evidence that may rebut the cancer presumption includes the lack of reasonable link between the latency period of the specific cancer and the “development or manifestation” of the cancer.
 - 3) The presumptions discussed above and found in Table I have been expanded to disallow apportionment of permanent disability beginning 1-1-07 [Labor Code §4663(e)] (See also, Section III Benefits Apportionment of Permanent Disability).

SECTION III

BENEFITS

III.

BENEFITS

A. Workers' Compensation Benefits

Typical benefits under California Workers' Compensation laws generally fall into five categories. These categories are:

- Medical benefits
- Temporary disability indemnity benefits
- Permanent disability indemnity benefits
- Supplemental Job Displacement Benefits (for injuries after 1-1-04)
- Dependency (death) benefits.

There is a separate category of benefits called penalties which will be dealt with in another section (see Section IV).

1. **Medical Treatment**

California law provides that an employee who is injured on the job is entitled to all the medical treatment which is reasonably required to cure or relieve from the effects of the injury. Determination of the reasonableness and necessity of medical treatment is subject to Utilization Review (UR) (Labor Code §4610), which is mandatory for all employers and effective for all dates of injury. UR standards must be consistent with the schedule for medical treatment utilization adopted pursuant to Labor Code §5307.27 and the Medical Treatment Utilization Schedule (MTUS).

Labor Code §4604.5(b) states that medical treatment is determined by the recommended guidelines set forth in the MTUS. Effective July 18, 2009 the Administrative Director's (AD) changes to the MTUS include Acupuncture Guidelines, Chronic Pain Medical Treatment Guidelines, and post Surgical MT Guidelines (see Cal Code of Regulations §9792.24 1- 3). The MTUS (including new guidelines) adopted pursuant to Labor Code §5307.27 shall be presumptively correct on the issue of the extent and scope of medical treatment. This presumption may be rebutted by a preponderance of scientific medical evidence based on other scientifically based, nationally recognized and peer reviewed guidelines. Medical care is not limited in terms of time or money and is provided entirely by the employer without co-payments or deductibles from the employee.

a. **MPN Medical Treatment**

Utilization Review determinations are now effective for 12 months unless there is a documented change in the injured worker's condition. Labor Code §§4616, et seq. allow the employer on or after 1/1/05 to establish a medical provider network (MPN) for provision of medical treatment to injured employees. The framework for provision of medical treatment differs depending on whether it is within or outside of an MPN.

Once an injury has been reported to the employer, it is the employer's obligation to make an offer of medical care on a timely basis. If the employer does so, the employer and/or its administrator/insurance company has the right to control the provision of medical care for the first 30 days after the injury is reported. Thereafter, the employee may select his own treating physician at a facility of his choice within a reasonable geographic area. A chiropractor shall not be a treating physician after an employee has received a maximum number (24) of chiropractic visits (Labor Code §4600(c)). If the employer fails to make an offer of medical care on a timely basis, the injured worker has the right to obtain medical care with a physician or medical facility of his choice at the employer's expense. It is therefore extremely important that the employer, when an injury is reported, makes a timely offer of medical care in order to maintain the right to direct medical care for at least the first 30 days and up until the point where the employee designates his own physician to provide further medical care.

Labor Code §4600 allows an employee to pre-designate his personal physician as the medical provider in the event of an industrial injury. Under these circumstances, the injured worker may then go to his own pre-designated personal physician immediately. In order for an employee to pre-designate his physician, the following five requirements must be met:

- 1) The employee must have health care coverage for non-occupational injuries or illnesses on the date of injury;
- 2) Written notice must be given to the employer setting forth the physician's name prior to the date of injury;
- 3) The medical provider must be a physician as defined in the Business and Professions Code (may not be a chiropractor) who has previously directed the employee's medical treatment; and
- 4) The named physician must retain the employee's medical records, including medical history, in the physician's office;
- 5) The physician must agree to be pre-designated.

The medical care to be provided to injured employees is defined in broad terms. Medical treatment includes medical, surgical, chiropractic and hospital treatment, including nursing, medicines, medical and surgical supplies, crutches and apparatus including orthotic and prosthetic devices and services. Also included may be reasonably needed psychological counseling provided by a psychiatrist, psychologist or other mental health practitioners (with certain restrictions for monitoring by a medical physician). Medical treatment also includes reasonable transportation expense to and from offices of physicians; travel to hospitals and for obtaining prescriptions authorized by the treating physician and temporary disability benefits in the event the employee loses wages while obtaining medical care.

While the employer has the right to control medical care for the first 30 days (in the absence of pre-designation of the personal physician or failure to offer medical care), employees have the right to request the employer to provide a

change of treating physician at any time including during the first 30 days. Any such request must be responded to within five working days or thereafter employees may select any physician they choose to provide care. Employees are also entitled, in a serious case, upon request to the services of a consulting physician or chiropractor of their choice at the expense of the employer. Contrary to common belief, an employee may change physicians more than once, so long as the changes are reasonable.

The MPN established by the employer **on or after 1/1/13** must meet the statutory requirements set forth in Labor Code §4616 and the employer must secure approval of the proposed MPN from the AD. MPN approval by the AD is valid for four years. (Commencing 1/1/14 existing and approved MPNs shall likewise be valid and approved for four years.) Moreover, if the AD does not act on a submitted MPN, within 60 days it shall be deemed approved. Once approved, there shall be a conclusive presumption by the Appeals Board that the MPN is valid.

If an employee disputes either the diagnosis or treatment prescribed by the MPN physician, the employee may seek the opinion of another physician within the MPN. If the injured employee disputes the diagnosis or treatment prescribed by the second MPN physician, the employee may seek an opinion from a third MPN physician.

Noteworthy is that **commencing 1/1/14**, every MPN must provide one or more individuals within the United States to serve as medical access assistants to help the injured employee find an available physician.

b. Medical Treatment Disputes

Pursuant to Labor Code §4610.5(d), for all dates of injury, if a treatment recommendation is denied, modified, or delayed pursuant to Utilization Review, the employee's remedy for appeal is to request an Independent Medical Review (IMR) within 30 days of service of the adverse determination.

The request must be made on the form prescribed by the AD to initiate the IMR process. Within 10 days of notice of assignment to an IMR organization (the identity of the IMR physician remains confidential) the employer must provide all requisite medical records and correspondence as set forth in Labor Code §4610.5(l), including the following:

All medical records regarding current medical condition, medical treatment, disputed medical treatment requested, correspondence regarding disputed treatment, employee information and "all other relevant documents."

Contemporaneous service must be made on the employee and the requesting physician. The foregoing must be supplied to the IMR within 10 days for regular treatment requests, and 24 hours for Expedited Treatment requests. The IMR

will make a determination on the request within 30 days for regular requests, or 3 days for Expedited Requests, based upon the standards of medical necessity as defined in Labor Code §4610.5(c).

The IMR determination is deemed a determination of the AD and is binding upon all parties. The grounds for appeal are limited to fraud, conflict of interest, bias, or mistake of fact. If the decision of the AD is reversed, the matter is remanded to the AD to submit dispute to IMR by a different review organization. Any decision of medical necessity must be “promptly” implemented by the employer.

2. Temporary Disability Benefits

Injured workers are entitled to compensation if they are incapacitated from the effects of their industrial injuries and are unable to work. The rate of temporary disability payments depends on the injured worker’s employment status and earnings. For injuries prior to 4/19/04, the duration of temporary disability payments is not limited by statute. For injuries on or after 4/19/04, aggregate temporary disability payments for a single injury shall not extend for more than 104 compensable weeks within a period of two years from the date of commencement of temporary disability payment. For injuries on or after 1/1/08, aggregate temporary disability payments for a single injury shall not extend for more than 104 compensable weeks within five years of the date of injury unless the case falls under the Labor Code 3212.1 cancer presumption, in which case temporary disability may extend for up to 240 weeks for injuries occurring on or after 1/1/2023. See Labor Code §4656(d). There is a statutory exception to these limitations, which applies if the injury falls within one of nine specific injuries or illnesses. If the injured worker falls within the exception, then temporary disability may extend beyond 104 weeks to 240 weeks (Labor Code §4656(c)).

a. Education Code Benefits

Injured workers employed by School Districts may be entitled to receive supplemental Education Code benefits in conjunction with Labor Code benefits, not to exceed the injured worker’s normal wage. Once the supplements are exhausted or expired, the injured worker will receive only temporary disability. This necessitates the integration of multiple layers of benefits under the Labor Code, the Education Code and Collective Bargaining Agreements.

Supplemental benefits are paid as follows:

1) Industrial Accident Leave

School Districts must first provide 60 days of “industrial accident” and/or “illness leaves of absence,” pursuant to Education Code §§44984 (certificated) and 45192 (classified). The 60 days of Industrial Accident Leave (IAL) are in addition to and precede any sick pay, vacation and other leave benefits. IAL commences on the first day of absence due to the industrial injury and is not dependent on the injured worker’s right to temporary disability. IAL restores the injured worker to full salary. One day of IAL is paid for each day of an authorized absence. Once IAL is exhausted, the injured worker receives temporary disability

supplemented by other available leave benefits as described below. IAL does not accumulate year to year, and the injured worker is entitled to receive only one period of IAL per injury, per fiscal year. In the event the IAL overlaps onto a subsequent fiscal year, the injured worker is only entitled to the remaining days of the same IAL period. The injured worker does not receive a second 60 day period in the new fiscal year.

IAL benefits do not extend the period during which an injured worker is entitled to temporary disability benefits. The Court of Appeal, in *Brooks v. Workers' Comp. Appeals Bd.* (2008) 161 Cal.App.4th 1522, opined that Industrial Disability Leave, as provided for in the Government Code for public employees, did not extend the period which the injured worker was entitled to temporary disability benefits pursuant to Labor Code §4656(c)(1). The Court reasoned that the injured worker's entitlement was to temporary disability indemnity, which is a substitute for lost wages during a period of temporary disability or incapacity, separate and distinct from temporary disability payments made by employers (if self-insured) or insurance carriers (see also *Mt. Diablo Unified Sch. Dist. v. Workers' Comp. Appeals Bd. (Rollick)* (2008) 165 Cal.App.4th 1154).

2) Sick Leave

Sick leave days are utilized once IAL is exhausted. Unlike IAL, sick leave days are accumulated from year to year, pursuant to Education Code §§44978 and 45191. As with IAL, the combination of sick leave and temporary disability shall not exceed the injured worker's full wage or salary.

3) Vacation

Vacation days may be utilized by classified employees once IAL and sick leave days are exhausted. The amount of vacation time is determined by the amount of time worked and, like sick leave, may be accumulated from year to year. (Education Code §45197). Vacation is applied at different times depending on whether the classified employee falls under a **differential program** or a **half pay program**. Classified employees on a **differential program** have vacation applied after sick leave is exhausted and prior to the application of differential. Classified employees on a **half pay program** have vacation applied as dictated by the District's Collective Bargaining Agreement, Memorandum of Understanding or pattern and practice. However, vacation cannot be combined with §45196 leave. As with IAL and sick leave, the combination of vacation time and temporary disability shall not exceed the injured worker's full wage or salary. Certificated employees are not entitled to paid vacation pursuant to the Education Code.

4) Differential and 50% or "Half" Pay

Differential pay is a challenging concept to grasp. Simply put, when the injured worker is unable to work his job a substitute needs to be hired.

Differential pay is defined as the difference between the injured worker's regular wage or salary less regular deductions (i.e. retirement, insurance, etc) and the amount paid to a substitute. As a result, the injured worker's position is preserved during leave. Differential pay follows other available leaves described above, and the amount for the differential varies between certificated and classified employees (Education Code §44977 & §45196).

As with IAL, sick leave, and vacation, the combination of temporary disability and differential shall not exceed the employee's regular wages or salary, less regular deductions.

50% or "half" pay is paid in lieu of differential pay when adopted by the governing School Board or collectively bargained.

- a) **Certificated** – Pursuant to Education Code §44977, certificated employees are limited to five school months of differential, or five school months or less of half pay, per injury or illness.
- Differential is mandatory whether or not the substitute is obtained. **Differential pay** commences once IAL, the current year's sick leave and accumulated sick leave are exhausted. Sick leave, including accumulated sick leave, and the five school months of certificated differential run **consecutively**.
 - In contrast, the five school months of certificated **half pay** runs **concurrently** with accumulated sick leave, and the employee receives half pay after accumulated sick leave is exhausted.

Veguez v. Long Beach Unified Sch. Dist. (2005) 127 Cal.App.4th 406, held that §44977(b)(2) allows five months of differential pay per injury. This case addresses whether a certificated employee is entitled to multiple periods of differential pay if there are multiple injuries. The Court held that an employee is only entitled to one period of differential pay per accident, regardless of the number of injuries sustained in the accident.

- b) **Classified** - Pursuant to Education Code §45196, the School District has the option of paying a minimum of 100 days of half-pay, minus sick days. For classified employees, if the substitute is not hired, the employee receives full pay.
- Classified **differential** benefits run **concurrently** with IAL, the current year's sick leave, accumulated sick leave and vacation. It commences with the first day of disability, and is limited to a total of five months.
 - Classified **half-pay** commences after IAL is exhausted. Half-pay runs **concurrently** with current and

accumulated sick leave, and is paid for a minimum of 100 working days. Vacation cannot be combined with half pay. Application of vacation is dictated by the District's Collective Bargaining Agreement, Memorandum of Understanding, and/or pattern and practice.

In *California Sch. Employees Ass'n. v. Colton Joint Unified Sch. Dist.* (2009) 170 Cal.App.4th 857, the Court of Appeal held that the 100 working days "shall be exclusive of any other paid leave, holidays, vacation or compensating time," which means that a District shall not combine vacation leave concurrently with §45196 leave, but rather that these leaves should be deducted separately or consecutively.

5) Other Leave Provisions

The Education Code requires that, prior to placing an employee on the 39 month rehire list all available leaves must be exhausted. However, before placing an employee on the rehire list, it is imperative to take into consideration the provisions of the Family and Medical Leave Act (FMLA), and whether the Collective Bargaining Agreement provides for other forms of leave.

6) 39-Month Rehire

After the above-referenced Education Code benefits are exhausted, and if the injured worker remains disabled, certificated employees on permanent status and classified employees are placed on re-employment lists for a period 39 months pursuant to §§44978.1 and 45192, respectively. The re-employment list for certificated employees on probationary status is 24 months. Employees on the list are given priority entitlement to jobs that become available that fall within their restrictions.

An employee's entitlement to reinstatement once on the rehire list depends on whether he is certificated or classified. For certificated employees, reinstatement is not conditioned on the availability of a position; rather, reinstatement is required once the employee is medically able to return to work in a position for which the employee is credentialed and qualified. On the other hand, classified employees must be returned to a position only if a vacant position is available.

Temporary disability benefits may continue to be paid subject to the limits of Labor Code §4656 while the injured worker is on the rehire list.

Romero v. WCAB (2003) 68 CCC 1250 (writ denied) held that placing an injured worker on the 39-month rehire list while they are receiving temporary disability is mandatory and not a Labor Code §132a violation.

b. Other Issues

1) Payroll

Temporary disability is a non-taxable benefit. However, Education Code benefits are taxable.

2) EDD

Eligible workers experiencing wage loss because they are unable to perform their work duties due to a non-industrial illness or injury may receive Disability Insurance through the Employment Development Department. School Districts are not required to withhold for State Disability Insurance but coverage may be extended upon request under certain circumstances.

3) Temporary Disability and Return to Work

Once Educational Code benefits are exhausted, temporary disability benefits continue until the injured worker either returns to work, returns to partial duty, is declared permanent and stationary (and therefore has fully recovered or has permanent disability restrictions), or the statutory period for payment of temporary disability has expired. Temporary disability benefits are payable every two weeks at the rate of two thirds of employee's average weekly wages subject to statutory maximums as set out in Table II.

The employer's obligation to pay temporary disability indemnity benefits for the effects of an injury continues until one of the above stated events occurs. Payments to injured workers under Education Code §44043 trigger the 104-week limit on disability benefits under **Labor Code §4656**.

For purposes of determining the two-year cap on temporary disability, the Court of Appeal has held that temporary disability payments commenced when the district paid the employee his normal wages under Education Code §44043. Entitlement to §44043 benefits is contingent on payment of temporary disability, and therefore the date on which temporary disability is commenced can be no later than date of first payment under Education Code §44043. (*Rollick, supra*, 165 Cal.App.4th 1154).

Mt. Diablo, and the subsequent case of *County of Alameda v. Workers' Comp. Appeals Bd. (Knittel)* (2013) 213 Cal.App.4th 278, regarding **Labor Code §4850** time, together, stand for the proposition that aggregate disability payments can include benefits other than temporary disability indemnity.

Employers can limit their obligation to pay temporary disability indemnity by offering modified duty to employees. Upon release by a physician of the employee to modified duty, an employer may stop paying temporary disability indemnity benefits if they are able to offer the employee work within his stated restrictions. This occurs even if an employee refuses to return to the modified duty upon release. Because this issue is often subject to litigation, it is recommended that any and all offers of modified or alternative work to an employee by the employer be made in writing. If the employer is unable to accommodate the restrictions given by the physician the employee's right to receive temporary disability indemnity benefits continues.

Early return to work, through offers of modified work, saves money and keeps the injured worker involved with the employment environment creating a positive relationship through the recovery process. An employer should maintain clearly defined job descriptions of all employees' usual work and light duty opportunities. These descriptions of work options should be quickly communicated to the treating doctor by providing them to the claims administrator or directly by the employer. The goal is to have the treating doctor know that the employer wants the injured worker back as soon as possible and is willing to provide temporary light duty if needed.

In summary, the employer's obligation to pay temporary disability benefits for the effects of an injury continues until one of the following: 1) permanent and stationary status; 2) an offer of modified or regular work; 3) but in no event more than 104 weeks for most injuries (unless limited exceptions found in Labor Code §4856).

3. **Permanent Disability Benefits**

Should an industrial injury leave an employee with permanent impairment, the employee is entitled to an award of money based upon the employee's injury or disfigurement, his occupation, and age. Volunteer Firefighters and Reserve Police Officers are presumed to have maximum wage earning regardless of their compensation from the safety work or elsewhere. (Labor Code §§4458 and 4458.2). The presumption of maximum wages does not apply to full-time paid Firefighters or Police. **For injuries on or after 1/1/13**, Permanent Disability (PD) is governed by new Labor Code §4660.1(c)(1), which eliminates some psychiatric injuries such as sexual dysfunction and sleep impairment as compensable consequences (with notable exceptions for violent crimes or catastrophic injuries). Injured employees can still receive treatment however, for injuries affecting those body parts or giving rise to those conditions.

Labor Code §4650(b) is amended to provide (**Effective 1-1-13 for all dates of injury**) that if the employer offers an injured employee a job that pays at least 85% of his pre-injury wages and compensation or if the employee is employed in a position that pays at least 100 percent of the pre-injury wages and compensation, no PD advances are required to be paid **prior to a PD award by the WCAB**.

When a PD award is made, the PD amount due is calculated from the last date of TD or the date the employee's disability became P&S, whichever is earlier. This incentivizes both the employee to return to work as soon as possible, and the employer to make a job offer paying at least 85% of pre-injury wages and compensation as soon as possible.

In summary, the employer is not required to begin PD indemnity if the employee returns to work with his employer at 85% of pre-injury wages and compensation, or is working at a job that pays 100% of pre-injury wages and compensation – **even if the employee is working for a different employer.**

For pre-1/1/13 dates of injury, Labor Code §4658(d)(2), still requires a 15% PD increase for employers with 50 or more employees. However regardless of the number of employees, permanent partial disability benefits may be reduced by 15% per week if the employer offers regular, modified or alternative work within 60 days of the employee's condition becoming permanent and stationary. Labor Code §4658(d)(3)(A). Failure to offer regular, modified or alternative work within 60 days of the employee's condition becoming permanent and stationary will result in a 15% increase in the weekly PD benefit thereafter. **For injuries occurring on or after 1/1/13, the 15% increase or decrease has been eliminated.**

An employee left permanently and totally disabled as a result of an industrial injury will still receive the temporary disability indemnity benefits in effect on the date of injury for the remainder of his life. Life Pension provisions also remain unchanged. The Supreme Court has decided that the COLAs operative in Labor Code §4659(c) for injuries after 1/1/03 are to begin on the January 1st of the year following the date the worker became entitled to receive and actually begins receiving either permanent total disability payments or a life pension payment.

4. Apportionment of Permanent Disability

In general, an employer is responsible to pay only for the permanent disability directly caused by the industrial injury. The law of apportionment is set forth in Labor Code §§4663 and 4664; however, its interpretation is highly complex and often litigated. The California Appellate Court in *Benson v. Workers' Comp. Appeals Bd.* (2009) 170 Cal.App.4th 1535, 37 CWCR 27, 74 CCC 113, held that "the new statutory scheme requires apportionment to each cause of a permanent disability, including each distinct industrial injury." Labor Code §4663(e) states that apportionment as to causation shall not apply to the presumptive injuries under Labor Code §3212 et seq. (see also Section II, part C - Presumptions). Thus a Public Safety worker whose injury is covered by presumption in Labor Code §§3212 - 3213 is excluded from apportionment to pre-existing conditions, but not actual disability previously awarded by the WCAB.

5. Vocational Rehabilitation Benefits

Workers injured before 1/1/04 that are unable to return to their usual and customary occupations as a result of their injuries, are eligible pursuant to Labor Code §139.5 to vocational rehabilitation benefits to assist them in the return to employment, but must request services before 1/1/09. As of 1/1/09 Labor Code §139.5 ceased to be in effect.

The WCAB issued a unanimous decision in *Weiner v. Ralph's Co.* (2009) 37 CWCR 147, 74 CCC 736 (en banc) which held that the repeal of 139.5 terminated all rights to vocational rehabilitation benefits or services where the right to VR benefits had not vested prior to 1/1/09.

6. Supplemental Job Displacement Vouchers and the Interactive Process

For Dates of Injury 1/1/04 – 12/31/12 qualified employees are entitled to supplemental job displacement vouchers (Labor Code § 4658.5). Workers injured on or after 1/1/05 are not entitled to Vocational Rehabilitation Benefits discussed previously in Section IV. Up to 10% of the value of the vouchers may be designated for vocational or return to work counseling. This benefit does not provide a weekly maintenance allowance and is a reduced benefit when compared to its predecessor. The amount of this benefit is determined by the amount of permanent disability. (See Forms L3 & M2). A voucher must be used within five years of the date of injury or within two years of the date it was furnished if it was issued **on or after 1/1/13**.

Effective 1/1/13, there are new limitations on the monetary value of vouchers for **dates of injury on or after 1/1/13**. Vouchers now have an expiration date; new vouchers for injuries **on or after 1/1/13** are capped at \$6,000. Also, vouchers for injuries **on or after 1/1/13** cannot be settled, and injuries sustained during the use of the voucher are not compensable. **For the dates of injury on or after 1/1/13**, the voucher expires two years after the date it is furnished or five years after the date of injury (Labor Code §4658.7). Covered voucher expenses have been expanded under the new legislation.

For dates of injury on or after 1/1/2013, a voucher must be used within five years of the date of injury or within two years of the date it was furnished if it was issued **on or after 1/1/13**, whichever is later (§4658.5(d)). For dates of injury **on or after 1/1/13**, the voucher expires two years after the date it is furnished or five years after the date of injury (§4658.7).

Covered voucher expenses have been expanded.

For injuries on or after 1/1/13, the applicant is entitled to a voucher if he has residual disability and the employer does not make an appropriate timely job offer lasting 12 months. A timely offer is within 60 days of the carrier receiving the first P&S report from the treating physician or medical-legal evaluator. An appropriate job offer must be within the applicant's work restrictions.

To ensure that the offer is within the work restrictions, Labor Code §4658.7 essentially puts the burden on the carrier to start the interactive process. The new code section provides that if the employer or carrier provides the employee's job description to the physician, that physician shall evaluate and identify work restrictions. The carrier must then send the work restrictions to the employer in order to evaluate the availability of appropriate work (§4658.7(b)). The obligation of the employer to initiate the interactive process may have civil implications pursuant to AB 2222 (2000). Employers should familiarize themselves with the requirements of the FEHA/ADA and AB 2222 (2000) in handling employment decisions. It is recommended that employers have prepared Job

Descriptions and engage in the interactive process to explore reasonable accommodations of the employee's disability, by meeting with the employee to discuss those accommodations, even if the injury is impossible to accommodate or there is no alternative work is available. Failure to undertake the interactive process may result in a civil lawsuit in state or federal court.

Offers of modified or alternative work must be made by the employer through the use of Form 10133.35 (Form L1) for **injuries occurring on or after 1/1/13**, or Form DWC-AD 10133.53 (Form L3).

For positions which involve public safety (such as police, firefighters and emergency personnel), the requirement to provide reasonable accommodation is tempered by a recognition that the public's safety must be maintained. Accommodation in these cases may not be required if the employer maintains reasonable physical fitness standards that the injured worker cannot meet or if increased risk to the public can be shown. Remember the process by which an accommodation must be reasonable and involve communication with the injured worker.

The AD has established a Return to Work Supplement Program, if an injured has first received a supplemental job displacement benefit for injuries occurring on or after 1/1/13, as contained in 8 California Code of Regulations §17302 through §17309.

7. Dependency (Death) Benefits

Should an employee be killed or sustain injuries which result in death as a result of an injury during the course and scope of employment, his dependents (or the estate in certain instances), are entitled to statutory benefits. The amount of benefits is determined by the date of injury, the level of dependency and the number of dependents. In addition, the families of deceased employees, regardless of dependency, are entitled to a burial benefit up to a statutory maximum according to the chart in Table IV subject to proof of actual expenses.

In order for death benefits to be payable, the injured employee's death must occur within 240 weeks of the date of injury.

The families of public employees, including both safety and non-safety members, killed in the line of duty may be entitled to special death benefits from CalPERS or other retirement systems. There are limitations on eligibility, including per Labor Code §4707, and coordination with counsel is strongly recommended.

The Legislature enacted §5406.7 effective 1/1/2015. This provides a potential extension of the time to file for a presumptive cancer related death claim available to dependents of certain safety personnel under §3212.1. This statute applies to all pending cases but its application is complex. If applicable, it will extend the time to claim a death benefit from the statutory 240 weeks up to 420 weeks. It is recommended that you seek legal advice to determine if this extension applies. In 2018, the Legislature deleted the sunset clause that had provided that this provision would only be effective through 1/1/2019, thereby making the 420 week extension permanent.

B. Retirement Benefits

The majority of School District employees are members of two retirement systems; the State Teachers Retirement System (CalSTRS) or the Public Employees' Retirement System (CalPERS).

NOTE: Certain School Districts, such as Los Angeles and San Diego have their own retirement systems so the following discussion does not apply to those Districts with their own systems.

A general understanding of the retirement benefits is important when facing an employee who sustains a potentially career ending injury. However, the rules and regulations for each system are very complex and to make decisions in a specific case you should contact a benefit counselor and/or visit the website of the appropriate system.

1. Certificated Employees

Only Certificated Employees (defined in Unique Employment Relationships section – Page 1, Section A) can be members of **CalSTRS (State Teachers Retirement System)**. Under CalSTRS there are two types of retirement, Service and Disability.

a. Service Retirement

- 1) An employee is eligible for a Service Retirement when he has five (5) years of service credit and is age 55 or older, or he has 30 or more years of service credit and is age 50.
- 2) The amount is based on a formula using age, service credit and final compensation. For more detailed information go to:
<https://www.calstrs.com/retirement-benefits>
Or call: (800) 228-5453

b. Disability Retirement

- 1) To be eligible for a Disability Retirement most employees must have five years of service credit.
 - a) At least four years must be for actual performance of Defined Benefit service, including service credit earned while receiving workers' compensation payments;
 - b) The employee's last five years must have been performed in California;
 - c) The employee must earn one year of service credit if he previously received a refund, a service retirement benefit or a disability benefit.
- 2) There may be some exceptions to these service requirements. Please go to:
<https://www.calstrs.com/disability-benefits>
Or call: (800) 228-5453

- 3) Medical Eligibility
 - a) The disability must be permanent or expected to last 12 or more continuous months beyond the last day of work.
 - b) Prevents the employee from performing current job duties, duties with reasonable modification, or job duties of a comparable level (with at least 2/3rds of the employee's final compensation.)
 - c) If it predates the employee's most recent CalSTRS membership date, the impairment must have changed substantially.
 - d) Substantiated by competent medical documentation.
 - e) Not be the result of a willful self-inflicted injury.
 - f) The disability need NOT be caused by the employment.
- 4) Age Requirement
 - a) Must be under the age of 60 for a Coverage A employee (if they were a member before October 16, 1992 and did not elect Coverage B).
 - b) No age requirement for a Coverage B employee.
- 5) Timing of Benefits
 - a) The employee should apply for a disability benefit before he exhausts other benefits available. If approved, the employee's disability benefit will go into effect on whichever of the following dates occurs later:
 - (1) The first day of the month in which CalSTRS receives the application.
 - (2) The day after the last day of service for which the employee was paid.
- 6) Amount of the Benefit
 - a) 50% of final compensation.
 - b) An additional 10% for each dependent child (contact CalSTRS for a definition) up to an additional 40%.
 - c) Alternate formula for Coverage A: If the employee is between the ages of 45 and 60 and has less than 10 years of service credit, the employee's benefit will be 5% of their final compensation for each year of service credit.
 - d) There are deductions from the benefit for:
 - Coverage A Employees:**
 - Workers' Compensation payments.
 - Social Security disability.
 - Federal Military disability.
 - Employer-paid income protection plan.
 - Other disability programs financed with public funds.
 - Coverage B Employees:**
 - Workers Compensation payments.

2. **Classified Employees**

Classified Employees (defined in Unique Employment Relationships section – Page 1, Section B) are under the **Public Employees’ Retirement System (CalPERS)**.

For detailed information go to:

<https://www.calpers.ca.gov/docs/forms-publications/disability-retirement-pub.pdf>

<https://www.calpers.ca.gov/docs/forms-publications/school-benefits.pdf>

Or call: (888) 225-7377

a. **Service Retirement**

- 1) The employee must be at least age 50 and have a minimum of five years of CalPERS-credited service.
- 2) If the employee became a member on or after January 1, 2013, the employee must be at least 52. There are some exceptions to the five-year requirement. If the employee is employed on a part-time basis, and has worked at least five years, contact CalPERS to find out if an exception will apply.
- 3) The amount is based on a formula using age (benefit factor), service credit and final compensation.

See:

<https://www.calpers.ca.gov/docs/forms-publications/school-benefits.pdf>

b. **Disability Retirement**

The rules for a CalPERS Disability Requirement are more complex and detailed and we would urge you to contact CalPERS directly. Generally speaking though:

- 1) Eligibility:
 - a) Service Credit
 - (1) Five years of service credit are required. Contact CalPERS for part-time employment.
 - (2) For State second tier members 10 years of service credit is required.
 - b) Medical Eligibility:
 - (1) A disabling injury or illness that prevents the employee from performing their usual job duties with their current employer.
 - (2) The injury or illness need NOT be related to the employment.
 - c) Time Requirements to apply:
 - (1) While the employee is in CalPERS-covered employment; or
 - (2) Within four months of separation from CalPERS-covered employment; or
 - (3) At any time, if the employee is “separated” from or left his job because of a disability and he has remained disabled since then; or
 - (4) While on military or approved leave.

- 2) Amount of benefit is based on a formula using service credit, benefit factor (the rules here are very complex) and final compensation. See: <https://www.calpers.ca.gov/docs/forms-publications/disability-retirement-pub.pdf>

3. **School Safety Employees – Police & Fire**

School Safety Employees may also be eligible for Industrial Disability Retirement under CalPERS.

- a. CalPERS safety members who are permanently disabled from their work because of an industrial injury can receive a service connected disability retirement (this is also called an industrial disability retirement or “IDR”). Upon receipt of a service connected disability retirement benefit, or advances from the employer of those benefits under Labor Code §4850.3 or §4850.4, salary continuation under Labor Code §4850 ends. When an employer makes advances under Labor Code §4850.3 or §4850.4 the employer is paid back by CalPERS when the disability retirement is affirmed by CalPERS.
- b. In addition to termination of benefits pursuant to Labor Code §4850, a service connected disability retirement terminates the obligation of the employer to pay temporary disability indemnity benefits and vocational rehabilitation maintenance allowance benefits if applicable. It does not affect the obligation to pay permanent disability benefits, or supplemental job displacement vouchers.
- c. For a non-service connected disability retirement or a retirement for service, the obligation to pay temporary disability indemnity and vocational rehabilitation maintenance allowance benefits is not affected. Service connected disability payments are usually 50% of the member’s “final compensation” which is determined by one of several formulas depending upon the option the employer selected. Non-service connected disability benefits and service retirement are determined based upon years of service and earnings.

Effective January 1, 2003, Labor Code §4850.4 requires an employer to make advances in cases where the Industrial Disability Retirement is disputed, and there is no current authority for reimbursement by PERS should the injury be found to be non-industrial. However, the agency may pursue recovery Labor Code §4850.4(8). For general information about CalPERS benefits, please call or write:

CalPERS
Benefit Application Services Division
P.O. Box 2796
Sacramento, CA 95812
(888) 225-7377
www.calpers.ca.gov/

SECTION IV

PENALTIES

IV.

PENALTIES

Workers' Compensation law provides for several different types of "penalties" payable by employers and/or their insurance companies and adjusting agencies for various violations of either the law or public policy. The important ones are outlined as follows:

A. Serious and Willful Misconduct – Labor Code §§4551 and 4553

Should the employee be able to demonstrate that his injury was sustained as a result of serious and willful misconduct on the part of the employer, the employer is obligated to pay to the employee a supplemental benefit totaling 50% of all compensation and medical benefits payable to the employee. This benefit is payable by the employer, not the insurance company and/or a third party administrator (TPA), and may not be insured against although the employer may buy insurance to cover the costs of defending such a claim.

In order for an employee to demonstrate that the injury occurred as a result of serious and willful misconduct, he must demonstrate either one of the following two:

1. That the injury occurred as a result of the violation of a safety order which was designed to prevent the type of injury which occurred and that the employer through a managing representative had knowledge of the existence of the safety order and the violation of same, or
2. The employer had knowledge that a substantial risk of harm existed and took no steps to prevent the harm or correct the defect which was proximate cause of the resulting injury.
 - a. There is also a provision for the employer to claim that an injury was a result of the employee's own serious and willful misconduct. If the WCAB determines that the employee's injury was caused by such conduct, the employee's benefits are to be reduced by 50%. This remedy is rarely granted and is limited in application (Labor Code §4551).

There are several Court of Appeal cases discussing the elements of a serious and willful claim in the context of student assaults on teachers or their classroom aides. (See *Corona Norco Unified School District v. WCAB* (2000) 65 CCC 1215; *Elk Grove Unified School District v. WCAB* (2007) 72 CCC 399; *Rascoe v. WCAB* (1997) 62 CCC 1245; *Bird v. WCAB* (1998) 63 CCC 1405 (writ denied)). In those cases where serious and willful misconduct was not found, the Court emphasized that the employer did not have knowledge of the danger posed by the specific student, (See *Corona Norco Unified School District v. WCAB* (2000) 65 CCC 1215; *Bird v. WCAB* (1998) 63 CCC 1405 (writ denied)), or that the employer attempted corrective action. (See *Elk Grove Unified School District v. WCAB* (2007) 72 CCC 399).

In *Corona Norco Unified School District v. WCAB* (2000) 65 CCC 1215, the California Court of Appeal found no serious and willful misconduct, where the applicant did not show that the defendant knew that the student would assault the applicant, or that she requested a transfer because of the student's disruptive incidents prior to the assault. The Court emphasized that the applicant did not identify the specific student to the employer as being a particular concern. The applicant never requested that the student be removed from her classroom, and while she had requested a transfer prior to the assault, the request was not based on the student's conduct.

In *Elk Grove Unified School District v. WCAB* (2007) 72 CCC 399, the California Court of Appeal found no serious and willful misconduct by the employer and held that the employer had not deliberately failed to take corrective action for the applicant's safety. The employer made multiple attempts to have the student placed in a special education setting and was in the process of removing the student at the time of the student's attack on the applicant.

In *Bird v. WCAB* (1998) 63 CCC 1405 (writ denied), the California Court of Appeal denied writ of review where the WCJ's report found no serious and willful misconduct by the employer. While the applicant had recommended that the student be suspended prior to the student's assault on the applicant, the student had not previously caused serious bodily harm. The employer also had established guidelines for handling student aggression, and the employer's analysis of the student's behavior and adoption of a behavior modification plan conformed with its guidelines.

In contrast, the California Court of Appeal in *Rascoe v. WCAB* (1997) 62 CCC 1245 found serious and willful misconduct where a student had previously threatened the applicant, was known to have violent tendencies, and the employer was aware a violent attack was probable but placed the student in applicant's classroom over applicant's objection.

Taken together, these appellate cases support a finding of serious and willful misconduct by a school district employer when a teacher or aide identifies and documents a specific student as having violent tendencies, and requests a transfer of the employee or student due to that specific student's conduct. However, a school district may mitigate their exposure by documenting their efforts at corrective action, consistent with their district's policies for handling aggressive students.

Recently, a Board panel decision held that the employer school district engaged in serious and willful misconduct in failing to warn the applicant of the student's violent tendencies. *Sauceda v. Fresno Unified School District* (2020) 85 CCC 903. While the applicant had established the essential elements of a serious and willful claim, the Board also noted the employer's affirmative duty under the Education Code §49079 to inform teachers of students who have engaged in or are reasonably suspected to have engaged in specified acts, and that a knowing failure to provide information about a student under this section constitutes a misdemeanor offense. On this basis, the Board held that the failure to act under §49079 "is sufficient to trigger the provisions of Labor Code §4553." Feeling emboldened by this decision, applicants may argue that an employer's violation of §49079 is sufficient to establish serious and willful misconduct, even in the absence of employer knowledge of a danger posed by a particular student, or even if the employer has taken some corrective action.

B. Employer Discrimination Under Labor Code §132(a)

Labor Code §132(a) prohibits an employer from retaliating against an employee for filing or making known the intent to file a claim for workers' compensation benefits. The Supreme Court has held that an injured worker must show two elements to establish discrimination under §132(a). The injured worker must show the right to a benefit, condition of employment or status to which he or she is in some way "singled out" detrimentally, and that the detriment is not simply the result of a uniformly applied policy that is not itself discriminatory. When those two elements are shown then the employer must show its action, though detrimental to the injured worker, was the result of a reasonable "business necessity". *Department of Rehabilitation v. Workers' Comp. Appeals Bd. (Lauher)* (2003) 30 Cal.4th 1281, 68 CCC 831. Any action that affects the employee's benefits, employment status, seniority, etc., must be considered as potentially conflicting with this protection and evaluated as to the possibility of being considered discriminatory.

In the event of a finding of employer violation of Labor Code §132(a), the employee is entitled to reinstatement with lost wages and benefits from the date of the discriminatory act, plus penalty of 50% of all benefits provided, up to a maximum of \$10,000, and costs of up to \$250. Similar to Serious and Willful misconduct, an employer cannot insure against a claim for benefits under Labor Code §132(a).

Further, a separate civil remedy for industrial injury discrimination is allowed, and creates an even greater liability which is generally not covered by insurance. *City of Moorpark, et al v. Superior Court of Ventura County (Dillon)* (1999) 18 Cal.4th 1143, 63 CCC 944.

C. Miscellaneous Penalty Provisions

1. Unreasonable Delay in Payment of Benefits

Labor Code §5814 provides that in the event of a delay in the provision of benefits without reasonable doubt from a medical or legal standpoint, the benefit delayed (e.g.: a temporary disability payment) shall be increased up to 25%, but not more than \$10,000. SB 1127 enacted Labor Code §5414.3, which increased the maximum penalty to no more than \$50,000 for an unreasonable rejection of claims for safety officers that sustained presumptive injuries located at Labor Code 3212 to 3213.2. If the delay is merely the failure to pay a medical bill (where the services were timely provided), a different penalty applies payable to the medical provider (Labor Code §4603.2).

2. Delayed Disability Payments

An automatic, self-imposed penalty for any delayed payment of temporary or permanent disability requires a 10% increase on the amount delayed (Labor Code §4650). This penalty highlights the need for the claims examiner, employer and medical professional to effectively communicate with one another.

3. Unreasonable Delay in Paying an Award by a Public Entity

Labor Code §5814.5 provides for a special penalty for employers who are found to have unreasonably delayed payment on an award. Such a finding also entitles the injured

worker to have attorney's fees for enforcing the Award ordered in addition to the Labor Code §5814 penalty for delay.

4. Costs for Frivolous or Dilatory Tactics (Labor Code §5813)

For injured workers whose claims are filed after 1/1/94, there is also a provision for an award against a party whose actions are determined by the WCAB to be frivolous or solely for causing delay, of attorney's fees, costs and a special penalty of up to \$2,500. This penalty may be assessed against either party and is not limited to payment by the defendant.

SECTION V

CLAIMS HANDLING

V.

CLAIMS HANDLING

A. Teamwork

When a claim is presented, it is of utmost importance that the employer and claims administrator work together to gather facts necessary to process the claim. Under Labor Code §5402, the administrator has only 90 days (less time if a Covid-19 presumption or certain public safety presumption is applicable, see Labor Codes §§3212.86-88 and 5402(b)(2)) from the time the Claim Form was filed with the employer to accept or deny the claim. Further, during the delay period or until a denial issues, the employer must pay up to \$10,000 in reasonable medical costs consistent with utilization review limitations (Labor Code §§5402, 4610, 4616). Failure to act timely results in the claim being “presumed” accepted. This places considerable time pressure on the claims administrator and employer to accomplish the factual investigation and as may be required, obtain medical evidence to address causation issues.

An employer should have one person act as the “contact person” for the claims administrator to gather necessary facts and forms. This individual should become familiar with general claims handling to facilitate the process. Such a person is convenient as a central source of information for the employer and administrator. The position requires strict confidentiality as to all information, written or verbal as claims may become adversarial or result in litigation beyond workers’ compensation. An employer must insure that documents concerning claims are properly secured with limited access. Labor Code §3762 further protects the injured worker’s right to privacy by limiting the medical information the employer can receive to (1) the diagnosis and the treatment provided for this condition and (2) information necessary to modify work duties. This limitation makes it difficult for claims examiners to fully communicate the medical status of an injured worker to the employer and eliminates the prior practice of providing full medical reports to the employer. Nevertheless, the employer does have a “bill of rights” in Labor Code §3761 which provides for an information exchange regarding (1) the filing of claims directly upon the carrier, (2) an employer’s right to give information to dispute any aspect of the case or its settlement and (3) how reserves are calculated.

We hope to see further legislation that will help the employer and claims examiner exchange necessary medical information, yet protecting the employee’s privacy.

B. Early Employer Investigation

The employer can help the claims administrator by sharing background information that either proves or disproves a claim. Questionable claims should be clearly identified in order that the claims administrator can proceed with appropriate investigation. The filing of false claims by an employee is punishable as a felony; however, a corollary is the false denial of a claim is likewise punishable (Labor Code §5401.7). Thus it is important to establish facts and evidence to handle claims appropriately.

The employer should in a normal course of business investigate an industrial accident to document facts, retain physical evidence, identify witnesses, and obtain photographs as appropriate. Identifying the cause of an accident is critical to future prevention, by eliminating the problem, i.e. defective equipment, or becoming a topic for safety and training meetings.

This information gathered by the employer gives the claims administrator a chance to take appropriate action within the short time limits of the law and provides an opportunity for the employer to knowledgeably participate in either claim acceptance or rejection.

Employers must exercise care to avoid improper disclosure of medical and personnel information in their possession to third parties other than the claims administrator. Further disclosure of such material by the claims administrator to third parties may require medical, psychiatric, or employment/personnel record releases from the injured worker before disclosure can be made. Employers should be especially careful to abide by the “Peace Officers Bill of Rights Act” and the “Firefighter’s Bill of Rights Act” with respect to personnel records of these safety employees. [Govt. Code §3300 et seq (POBRA), and §§3250 et seq. (FBRA)]. Particularly, in psychiatric injury claims where a “good faith personnel action” defense is asserted against the safety officer, the personnel record must be secured by proper release before disclosure to third parties such as reviewing physicians. If the safety officer refuses, a special court proceeding called a “*Pitchess* Motion” exists in which the judge will make a confidential, “in camera”, review of the protected records allowing disclosure only to the extent necessary for the litigation. *Pitchess v. Superior Court* (1974) 11 Cal.3d 531. If there is any doubt by the employer regarding the confidentiality of records, it should be fully discussed with the claims administrator before any disclosure is made to third parties.

C. Continuing Employer Involvement

Even after a claim is accepted, an employer gaining knowledge that disproves the claim or any portion of it should communicate it to the claims administrator immediately. Most often this kind of information concerns the activities of the injured worker when they are inconsistent with the nature of the injury or, the activities demonstrate an ability to perform at least light duty work. In some cases, fraud may be involved requiring undercover investigation and appropriate legal steps. The employer plays a vital role by continuing to communicate facts about the claim and the injured worker’s activities which in turn maintains the integrity of the system as well as keeping it financially viable.

D. Key Personnel/Special Circumstances

Sometimes key or confidential personnel like the chief, a board member, or the contact person is the subject of a workers’ compensation claim. When this occurs it is necessary to avoid any conflict of interest or inappropriate disclosure of confidential information. Should this occur, consideration of an alternate claims contact person, or removal of the file entirely to the administrator may be needed. Discuss how to best handle claims with special circumstances or personnel with the claims administrator and, if need be, with legal counsel.

E. Mistakes to Avoid

Eleven mistakes employers make that increase worker compensation costs are listed below with a brief description of the consequence. It provides a good checklist for effective claims handling at the employer level.

COMMON EMPLOYER MISTAKES AND CONSEQUENCES

- 1. The Employer Ignores Employee's Report of Injury**
Employer/claims administrator is charged with knowledge of injury from the earliest date of knowledge.
- 2. The Employer Fails to Forward Claim Form or Medical Bills to Claims Administrator**
Claims administrator is charged with knowledge from date of the employer's receipt of the DWC-1. Failure to timely forward medical bills may preclude adjustment of charges and result in expensive penalties.
- 3. The Employer Fails to Investigate or Report Relevant Information Regarding Injury to Claims Administrator**
Claims administrator barred from presenting employer's investigation or information in employer's possession to rebut presumption of injury if it could have been discovered within the first 90 days (less time if a COVID-19 presumption or certain public safety presumption applies to the case). Employers should be aware that legislative changes in 2013 now permit the administrator to file an Application for Adjudication to commence formal discovery without incurring applicant attorney's fee for litigation.
- 4. The Employer Fails to Direct Employee to Designated Medical Provider**
Failure to make immediate offer of medical care and direct employee to obtaining care results in waiver of right to control medical care.
- 5. The Employer Fails to Provide Accurate Wage Statement When Requested**
Claims administrator is required to pay benefits at maximum rates unless it can prove otherwise by a wage statement. This can also result in penalties if payments are made at an inaccurate lower rate.
- 6. The Employer Refuses to Provide Early Return to Work (ERTW) Program (Temporary Modified Work)**
Across the board increase in all benefits particularly TD and employee loyalty/interest for the work diminishes.

- 7. The Employer Refuses to Consider Alternative/Modified Work Options and Does Not Engage the Employee in the Interactive Process**
Across the board increase in costs for all benefits, particularly rehabilitation for injuries prior to 1/1/04 and for injuries on or after 1/1/05, permanent disability, and possible FEHA and ADA exposure. AB 2222 (2000) requires employers to use an “interactive process” to involve the employee in the accommodation process. Additionally, under legislation effective 2013, an offer of return to work either full or modified duty serves to delay permanent disability advances under §4650 (b)(2) until an award issues which can be advantageous for settlement.
- 8. The Employer Fails to Correct Known/Acknowledged Safety Hazards**
Potential exposure for “Serious and Willful Misconduct,” an uninsurable 50% penalty, on all workers’ compensation benefits provided and increased risk for more claims.
- 9. The Employer Fails to Control Receipt and Distribution of Medical Information**
Exposure to possible civil liability for invasion of privacy (especially AIDS information).
- 10. The Employer Fails to Train Employees on Workers’ Compensation & Safety Issues, and/or to Become Involved in Claims Handling**
All of the above consequences.
- 11. Failure to Maintain Confidentiality of Medical and Personnel Information Concerning Safety Officers**
This can result in civil lawsuit, sanctions, and fines. Special protection for safety officers POBRA and FBRA. Records concerning HIV status and psychiatric are specially protected.

SECTION VI

COMMONLY USED FORMS

VI.

COMMONLY USED FORMS

Disclosure: The forms and notices included within this guidebook are not exhaustive. A complete compilation of forms can be found at the following two links:

<http://www.dir.ca.gov/dwc/forms.html>

<https://www.dir.ca.gov/dwc/BenefitNoticeManual/BenefitNoticeManual.pdf>

A. DWC-1 Workers' Compensation Claim Form

The DWC-1 Claim Form must be provided to an employee, either personally or by First Class Mail, within one day of an industrial injury if that injury results in lost time or medical treatment beyond first aid (Labor Code §5401). "First aid" is defined as "one time treatment of minor scratches, cuts, burns, splinters or other minor industrial injury." Minor industrial injury specifically excludes "serious" exposure to hazardous substances as defined by Labor Code §6302(i).

B. Form 5020 - Employer's Report of Occupational Injury or Illness

Form 5020 must be filed within five days of an industrial injury or occupational disease claim when injury or disease results in lost time beyond the day of the injury, or medical treatment beyond first aid as defined by Labor Code §5401.

C. Form 5021 - Doctor's First Report of Occupational Injury or Illness

Form 5021 must be completed by the doctor, as well as one section by the employee if they are able to do so and filed within five days of the initial exam by any physician providing treatment for an occupational injury or disease. Subsequently doctor's reports may be narrative or use "physicians progress Report," "Treating physician's Permanent and Stationary Report" entitled PR-2 and PR-3 respectively. New forms are being created as a result of passage of SB899 to address the new permanent disability schedule and apportionment issues.

D. Application for Adjudication of Claim

An Application for Adjudication must be filed in post-1/1/94 injuries in order to invoke the jurisdiction of the WCAB to allow discovery beyond obtaining records informally.

E. Notice Regarding Temporary Disability Benefits

The Notice Regarding Temporary Disability Benefits must be used whenever temporary disability payments are first made. The purpose of this notice is to inform the injured worker that his claim has been accepted, and to briefly explain the benefits that will be received. The form

also reports initial payments to the Division of Workers' Compensation. In cases of employees entitled to Labor Code §4850 benefits or other employees entitled to wage continuation or benefits in excess of statutory disability benefits, the form 500-F should be used.

F. Notice Regarding Permanent Disability Benefits Denial

The Notice Regarding Permanent Disability Benefits Denial should be used when the first and final payments of temporary disability benefits are being made at the same time, primarily in instances with very short amounts of lost time.

G. Notice Regarding Delay of Workers' Compensation Benefit

The Notice Regarding Delay of Workers' Compensation Benefit is used when a claim is placed on delay, where insufficient information is available to either accept or deny a claim for temporary disability benefits. The form must identify the reason for the delay and the decision, and inform the injured worker of the date by which the decision is likely to be made. This decision date cannot be more than 90 days after the date of the injury (less time if certain presumptions contained between Labor Codes §§ 3212 and 3213.2 apply).

H. Notice Regarding Denial of Workers' Compensation Benefit

The Notice Regarding Denial of Workers' Compensation Benefit is to be used when a decision has been made to deny the claim. This notice relates both to eligibility for temporary as well as permanent disability benefits. The Division of Workers' Compensation requires that the denial notice must be sent within 14 days after the decision has been made and must be sent to the employee within 90 days after the injury occurs to avoid the presumption of compensability provided for in Labor Code §5402 (less time if a COVID-19 or public safety officer presumption applies).

I. Notice Regarding Indemnity Benefits Payment Change

As noted above, the Notice Regarding Indemnity Benefits Payment Change must be used whenever the injured worker first receives benefits in excess of the statutory temporary disability benefits, most commonly in relation to employees entitled to receive §4850 benefits. Even though the employee is entitled to further benefits, the form must identify the statutory maximum and minimum benefits, particularly as eligibility for Labor Code §4850 benefits is limited to one year.

J. DWC Form IMR - Application for Independent Medical Review

This form is completed by, or on behalf of, the injured worker within 30 days following a Utilization Review decision letter delaying, denying or modifying a treating physician's request for medical services or treatment.

K. DWC Form RFA - Request for Authorization for Medical Treatment

This form is to be attached to the treating physician's report to request authorization for treatment. This form is **required** to initiate the Utilization Review process required by Labor Code §4610.

L. DWC Notices of Offer of Regular Work and Modified or Alternative Work

- L1** DWC - AD 10133.35 - Notice of Offer of Regular, Modified, or Alternative Work for **dates of injury on or after 1/1/13.**
- L2** DWC - AD 10118 - Notice of Offer of Regular Work for **dates of injury between 1/1/05 to 12/31/12, inclusive.**
- L3** DWC - AD 10133.53 - Notice of Offer of Modified or Alternative Work for **dates of injury between 1/1/04 to 12/31/12, inclusive.**

The proper form depending on date of injury must be used when making an offer or modified, alternative or regular work. Remember to employ an interactive process with the injured worker before making a return to work decision (AB 2222 (2000)).

M. DWC Supplemental Job Displacement Vouchers

- M1** DWC - AD 10133.32 - Supplemental Job Displacement Non Transferrable Voucher Form for **dates of injury on or after 1/1/13.**
- M2** DWC - AD 10133.57 - Supplemental Job Displacement Non Transferable Training Voucher Form for **dates of injury between 1/1/04 to 12/31/12.**

The proper form depends on the date of injury. For **dates of injury on or after 1/1/13** the voucher expires in two years, whereas prior to 1/1/13 there is no expiration of the voucher. The voucher expiration date is triggered by date of **receipt** of the voucher by the injured worker. The voucher for **dates of injury on or after 1/1/13** should be sent certified mail.

SECTION VII

TABLES & CHARTS

TABLE I

EVIDENTIARY PRESUMPTIONS UNDER LABOR CODE §§3212 – 3213.2 as of 2024

OFFICER CLASSIFICATION	HEART TROUBLE/ PNEUMONIA	HERNIA	TUBERCULOSIS	CANCER	LOWER BACK	BLOOD BORNE INFECTIOUS DISEASES MRSA	MENINGITIS	BIOCHEMICAL	LYME DISEASE	PTSD	COVID-19 (through 12/31/2023)
Sheriff's Office (PC 830.1)	3212.5 **	3212	3212.6	3212.1	3213.2 **	3212.8	3212.9	3212.85	3212.12	3212.15	3212.87
Police Officer (PC 830.1)	3212.5 **	3212	3212.6	3212.1	3213.2 **	3212.8	3212.9	3212.85	3212.12	3212.15	3212.87
DA investigators/ Inspectors (PC 830.1)	3212.5 **	3212	3212.6	3212.1		3212.8	3212.9	3212.85	3212.12	3212.15	3212.87
DOJ Officers (PC 830.1)	3212.7	3212.7	3212.7	3212.1		3212.8		3212.85	3212.12	3212.15	3212.87
Firefighters (local)	3212	3212	3212.6	3212.1		3212.8	3212.9	3212.85		3212.15	3212.87
Dept. Forestry f/fighters	3212	3212	3217.7	3212.1		3212.8	3212.9	3212.85		3212.15	3212.87
UC firefighters	3212.4	3212.4	3212.6	3212.1		3212.8	3212.9	3212.85		3212.15	3212.87
UC police (PC 830.2(b))	3213 **	3212	3212.6		3213.2 **	3212.8		3212.85	3212.12	3212.15	3212.87
CSU firefighters	3212	3212	3212.6	3212.1		3212.8	3212.9	3212.85	3212.12	3212.15	3212.87
CSU police (PC 830.2(c))		3212				3212.8	3212.9			3212.15	
Fish & Game Wardens (PC 830.2(e))	3212	3212		3212.1		3212.8		3212.85	3212.12		3212.87
CHP Officers (PC 830.2(a))	3212.3 / 3212.5 **	3212	3212.6	3212.1	3213.2 **	3212.8	3212.9	3212.85	3212.12	3212.15	3212.87
Other State police	3212.3 **	3212	3212.6	***		3212.8		3212.85	3212.12		
Dept. Corrections/parole, Probation, Custodial Officers or Youthful Offender Parole Board and Youth Auth. Group Counselors & Supervisors, Security, Custodial Parole Officers (PC 830.5)	3212.10	3212.7	3212.10	***		3212.8	3212.9 & 3212.10	3212.85	3212.12	3212.15	3212.87
School Dist. & Community College Police Officers (PC 830.32)										3212.15	
Lifeguards				3212.11							
CA Conservation Corps									3212.12		

* Anti-attribution clause precludes evidence of causation from pre-existing disease in §§ 3212, 3212.3, 3212.4, 3212.5, 3212.7, 3212.8, 3212.11 and 3213.

After 1-1-07 no apportionment of Permanent Disability resulting from any presumptive injury unless a prior award exists. See §4663(e) & §4664.

** Presumption arises only after 5 years; and for LC §3213.2, Lower Back presumption, additionally requires a duty belt is a condition of employment.

*** All peace Officers sworn under §§830.1, 830.2, and 830.37 are expressly covered under the cancer presumption §3212.1(a).

WARNING: Where specified in the presumption, only those stated peace Officers defined by specific penal code sections get the presumption. There may be specific conditions or precursors to the application of a presumption.

Where the application of a presumption is in doubt, seek the advice of counsel.

TABLE II

TEMPORARY DISABILITY BENEFITS

Injury During Period	Max Earnings****	Rate Payable	Min Earnings	Payable
1/1/84 - 12/31/89*	\$336.00	\$224.00	\$168.00	\$112.00
1/1/90 - 12/31/90**	\$399.00	\$266.00	See Below *	\$112.00
1/1/91 - 6/30/94**	\$504.00	\$336.00	See Below **	\$112.00
7/1/94 - 6/30/95**	\$609.00	\$406.00	“ ”	\$112.00
7/1/95 - 6/30/96**	\$672.00	\$448.00	“ ”	\$112.00
7/1/96 - 12/31/02	\$735.00	\$490.00	“ ”	\$112.00
1/1/03 - 12/31/03	\$903.00	\$602.00	\$189.00	\$126.00
1/1/04 - 12/31/04	\$1,092.00	\$728.00	\$189.00	\$126.00
1/1/05 - 12/31/06	\$1,260.00	\$840.00	\$189.00	\$126.00
1/1/07 - 12/31/07	\$1322.49	\$881.66	\$198.37	\$132.25
1/1/08 - 12/31/08	\$1,374.50	\$916.33	\$206.17	\$137.45
1/1/09 - 12/31/09	\$1,437.10	\$958.01	\$215.55	\$143.70
1/1/10 - 12/31/11	\$1,480.04	\$986.69	\$222.01	\$148.00
1/1/12 - 12/31/12	\$1,515.75	\$1,010.50	\$227.36	\$151.57
1/1/13 - 12/31/13	\$1,600.08	\$1,066.72	\$240.00	\$160.00
1/1/14 - 12/31/14	\$1,611.96	\$1,074.64	\$241.79	\$161.19
1/1/15 - 12/31/15	\$1,654.94	\$1,103.29	\$248.25	\$165.49
1/1/16 - 12/31/16	\$1,692.64	\$1,128.43	\$253.89	\$169.26
1/1/17 - 12/31/17	\$1,758.85	\$1,172.57	\$263.82	\$175.88
1/1/18 - 12/31/18	\$1,822.91	\$1,215.27	\$273.44	\$182.29
1/1/19 - 12/31/19	\$1,877.07	\$1,251.38	\$281.57	\$187.71
1/1/20 - 12/31/20	\$1,949.14	\$1,299.43	\$292.37	\$194.91
1/1/21 - 12/31/21	\$2,034.47	\$1,356.31	\$305.17	\$203.44
1/1/22 - 12/31/22	\$2,309.56	\$1,539.71	\$346.42	\$230.95
1/1/23 - 12/31/24	\$2,428.72	\$1,619.15	\$364.29	\$242.86
1/1/25 - 12/31/25	\$2,520.43	\$1,680.29	\$378.05	\$252.03
Labor Code §4850 Benefits***	(Full Salary)	(Full Salary)	(Full Salary)	(Full Salary)

*
For injuries after 1/1/90, but before 12/31/90 minimum rates are as follows:

- For AWE < \$98, TD = \$98
- For AWE > \$98, but < \$112, TD = AWE
- For AWE > \$112, minimum TD = \$112

**
For injuries on or after 1/1/91 but before 1/1/07 minimum TD rates are calculated as follows:
For AWE < \$126, TD = AWE (i.e.: If AWE = \$45, Then TD = \$45)
For AWE > \$126, Minimum TD = \$126

Full salary means the guaranteed salary payment for the position (i.e.: job description, memorandum of understanding [“MOU”] if applicable). Routine overtime or past annual average salary does not decide the issue. However if there is required overtime which is part of the job requirement such as a firefighter who is required to work 56 hours per week, year-round, then such overtime is part of full salary.

Labor Code §4458 (volunteer firefighters) and §4458.2 (reserve police officers) provide presumption of maximum earnings.

For injuries occurring after 1/1/07, the minimum and maximum earnings for computing rates payable will be increased in conjunction with the “State Average Weekly Wage” (SAWW), as determined by the U.S. Department of Labor. This resulted in no increase until 1/1/07.

TABLE III

PERMANENT PARTIAL DISABILITY: MINIMUM AND MAXIMUM RATES

Date of Injury	Minimum - Maximum PD Rate	Labor Code §
1-1-84 to 12-31-90	\$70 - \$140	L.C. §4453 (b)(2)
1-1-91 to 6-30-94		
1:0 to 14:3	\$70 - \$140	L.C. §4453 (b)(2)
25:0 to 99:3	\$70 - \$148	L.C. §4453 (b)(4)
7-1-94 to 6-30-95		
1:0 to 14:3	\$70 - \$140	L.C. §4453 (b)(2)
15:0 to 24:3	\$70 - \$148	L.C. §4453 (b)(3)
25:0 to 69:3	\$70 - \$158	L.C. §4453 (b)(5)
70:0 to 99:3	\$70 - \$168	L.C. §4453 (b)(6)
7-1-95 to 6-30-96		
1:0 to 14:3	\$70 - \$140	L.C. §4453 (b)(2)
15:0 to 24:3	\$70 - \$154	L.C. §4453 (b)(3)
25:0 to 69:3	\$70 - \$164	L.C. §4453 (b)(5)
70:0 to 99:3	\$70 - \$198	L.C. §4453 (b)(6)
7-1-96 to 12-31-02		
1:0 to 14:3	\$70 - \$140	L.C. §4453 (b)(2)
15:0 to 24:3	\$70 - \$160	L.C. §4453 (b)(3)
25:0 to 69:3	\$70 - \$170	L.C. §4453 (b)(5)
70:0 to 99:3	\$70 - \$230	L.C. §4453 (b)(6)
1-1-03 to 12-31-03		
1:0 to 69:0	\$100 - \$185	L.C. §4453 (b)(6)
70:0 to 99:0	\$100 - \$230	L.C. §4453 (b)(7)
1-1-04 to 12-31-04		
1:0 to 69:0	\$105 - \$200	L.C. §4453 (b)(6)
70:0 to 99:0	\$105 - \$250	L.C. §4453 (b)(7)
1-1-05 to 12-31-05*		
1:0 to 69:0	\$105 - \$220	L.C. §4453 (b)(6)
70:0 to 99:0	\$105 - \$270	L.C. §4453 (b)(7)
1-1-06 to 12-31-12*		
1:0 to 69:0	\$130 - \$230	L.C. §4453 (b)(6)
70:0 to 99:0	\$130 - \$270	L.C. §4453 (b)(7)
1-1-13 to 12-31-13		
1:0 to 54:0	\$160 - \$230	L.C. §4453(b)(8)
55:0 to 69:0	\$160 - \$270	L.C. §4453(b)(8)
70:0 to 99:0	\$160 - \$290	L.C. §4453(b)(8)
1-1-14 and after		
1: to 99:00	\$160 - \$290	L.C. §4453(b)(9)

* Actual rates subject to a 15% increase or decrease depending on size of employer and availability of regular, modified or alternate employment (Labor Code §4658(d)). This increase/decrease does not apply to injuries on or after 1-1-13.

Life pension, PD > 70:0

Formula : (PD - 60) x 0.015 x Earnings

Example - for 80% PD Award for 2015 injury at maximum \$515.38:
 (80 - 60) x 0.015 x \$515.38 = \$154.61/week

Subject to annual SAWWs COLA beginning January 1 of the calendar year following year in which LP benefits begin.

Max weekly earnings, Labor Code §4659

4-1-74 to 6-30-94	107.69
7-1-94 to 6-30-95	157.69
7-1-95 to 6-30-96	207.69
7-1-96 to 12-31-05	257.69*
1-1-06 to 12-31-17	515.38*

* For injuries on or after 1-1-03, a COLA adjustment will increase benefits. The Supreme Court decided that the increases begin on January 1st of the year following the date the worker became entitled to receive and actually begins receiving either permanent total disability payments or a life pension payment.

TABLE IV**DEATH BENEFITS PAYABLE FOR TOTAL AND PARTIAL DEPENDENCY**

Applicable to Injuries Occurring on or After January 1, 1991 Labor Code §4702

Status of Dependence	Death or Injury On or After			
	01/01/91	07/01/94	07/07/96	01/01/06
A. One total and no partial dependents	95,000	115,000	125,000	250,000
B. Two or more total dependents, regardless of the number of partial dependents	115,000	135,000	145,000	290,000
C. Three or more total dependents, regardless of the number of partial dependents	115,000	150,000	160,000	320,000
D. One total and one or more partial dependents	95,000*	115,000*	125,000*	250,000*
	115,000	125,000	145,000	290,000
* plus four times the amount annually support of any partial dependents, with the total paid not to exceed:				
E. No total and one or more partial dependents	Four times the amount annually devoted to the support of partial dependents, not to exceed:			8 times support:
	95,000	115,000	125,000	250,000
F. For injuries on or after 1/1/04, where there are no total nor partial dependents, \$250,000 is payable to the Director of Industrial Relations – Death Without Dependents Unit.*				

* The estate benefit has been held unconstitutional in *Six Flags, Inc. v. Workers' Comp. Appeals Bd.* (2006) 145 Cal.App.4th 91. (consult counsel for status).

Death Benefits are payable in installments in the same manner and amounts as temporary disability indemnity per Labor Code §4702(b), and are subject to increases under §4661.5 where earning qualify for the new maximum.

For injuries on or after 1/1/06, death benefits payable to a beneficiary physically or mentally “incapacitated from earning” continue for life of the child.

Labor Code §5406.7 may, under special circumstances, extend the time for filing for the dependent’s death benefit up to 420 weeks for presumptive cancer claims under Labor Code §3212.1. We recommend legal advice be obtained for its application.

Maximum Burial Expense Benefit: Labor Code §4701(a)

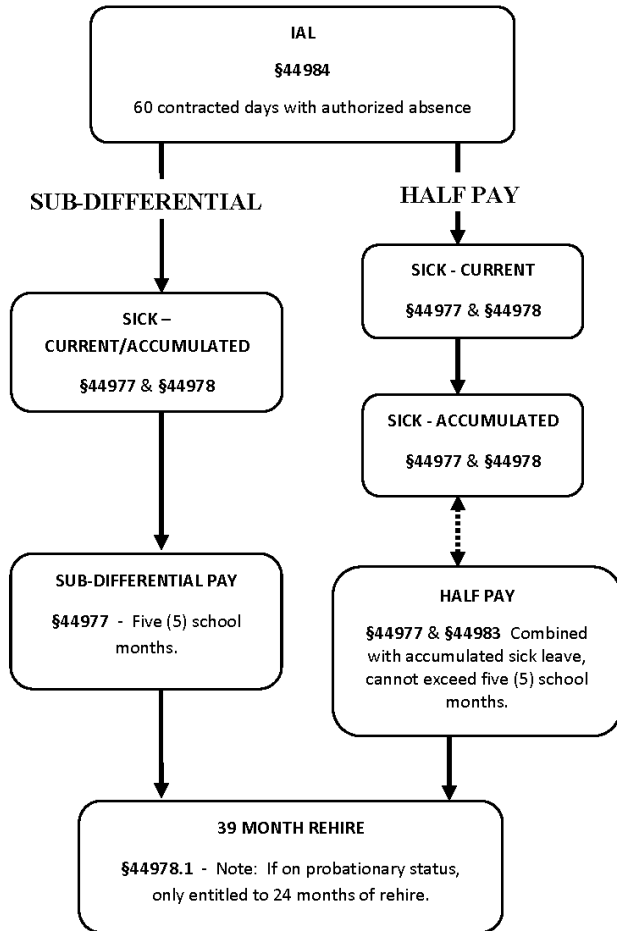
Date of Injury	Maximum Benefit
1/1/91 to 12/31/2012	5,000 All employees
1/1/13 to present	10,000 All employees

TABLE V

FLOW CHART FOR EDUCATION CODE BENEFITS §§44830-45197 as of 2017
Always consult your CBA, MOU and past practices as well as the Education Code.

CERTIFICATED EMPLOYEES

§§44830 et seq - Holds a credential, certificate, etc., and is employed in a position for which the Education Code requires said qualification.



CLASSIFIED EMPLOYEES

§§45104 et seq - Employed in non-certificated position.

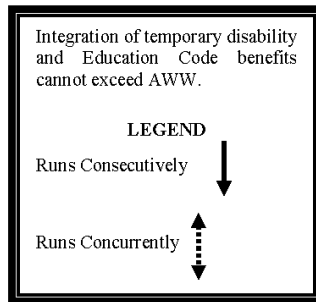
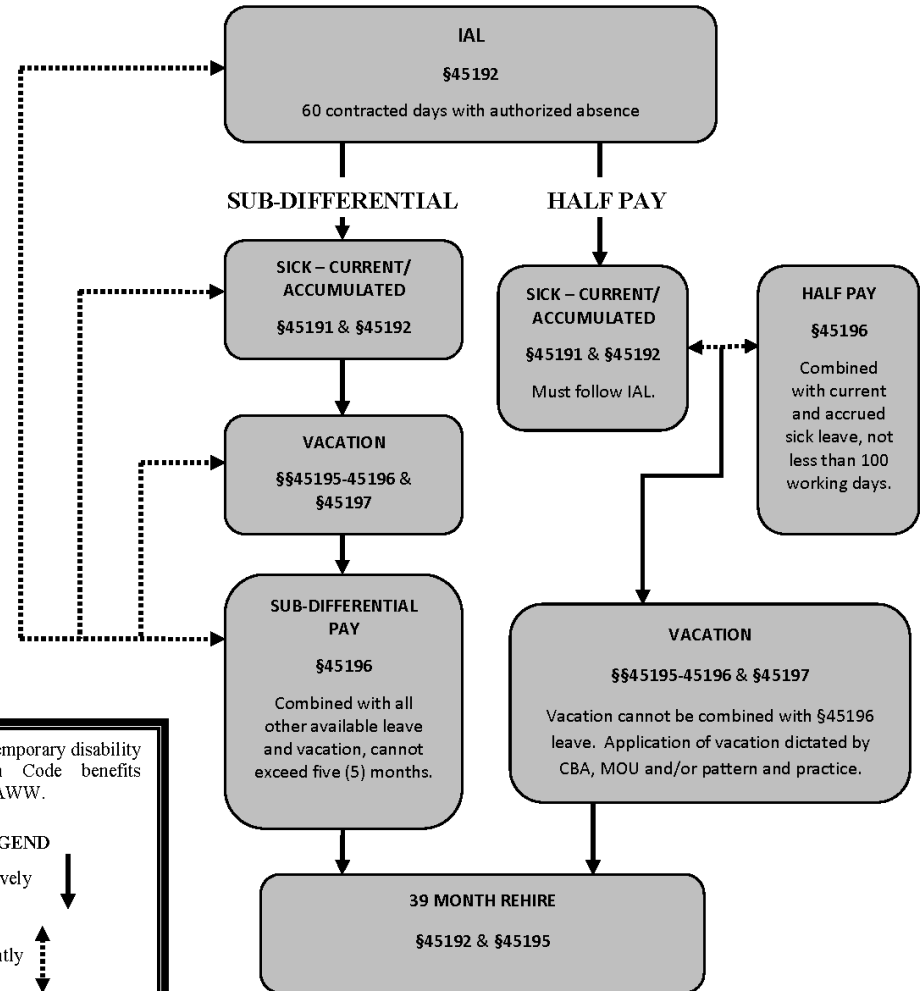
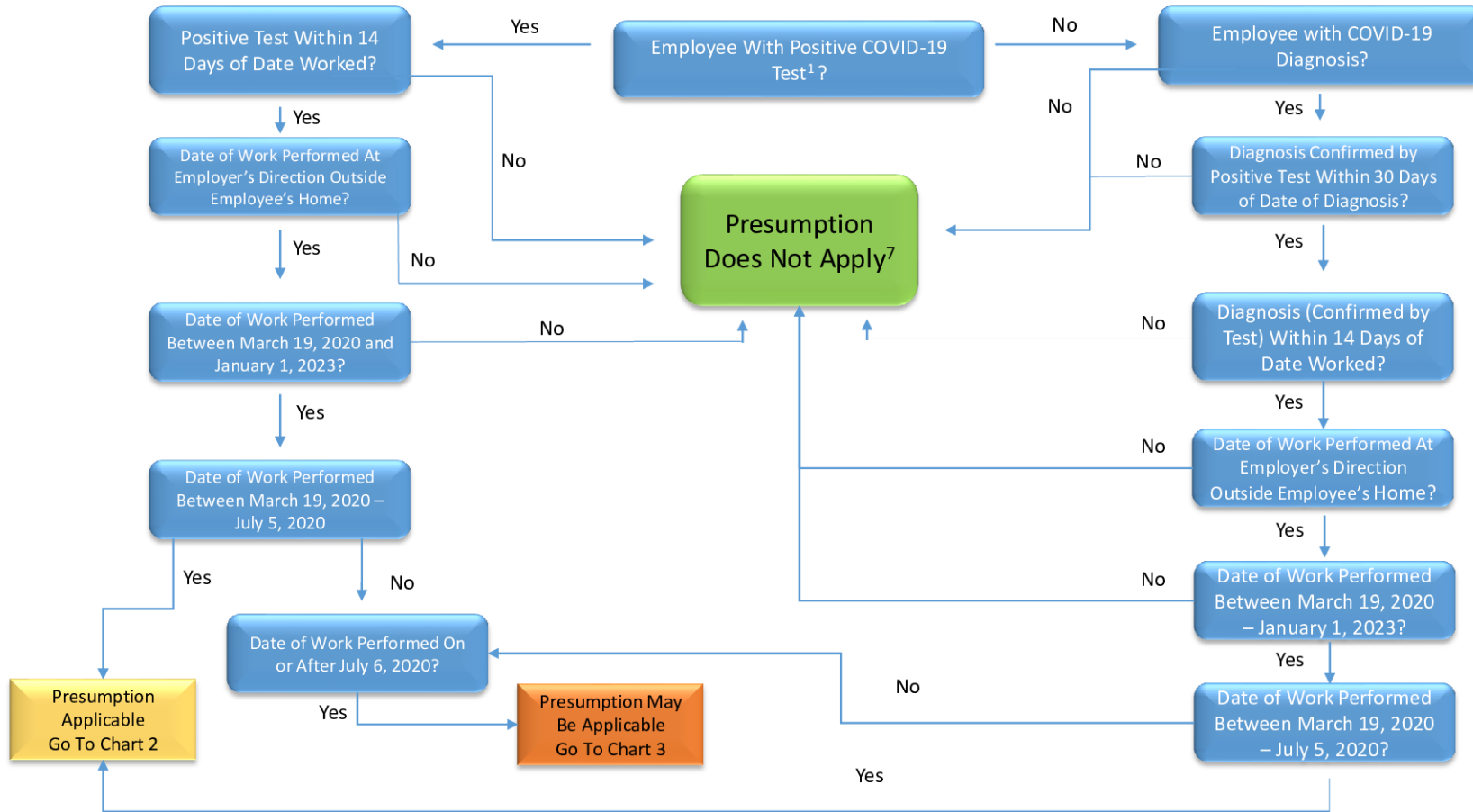


TABLE VI



COVID-19 Claim Flowchart

Chart 1

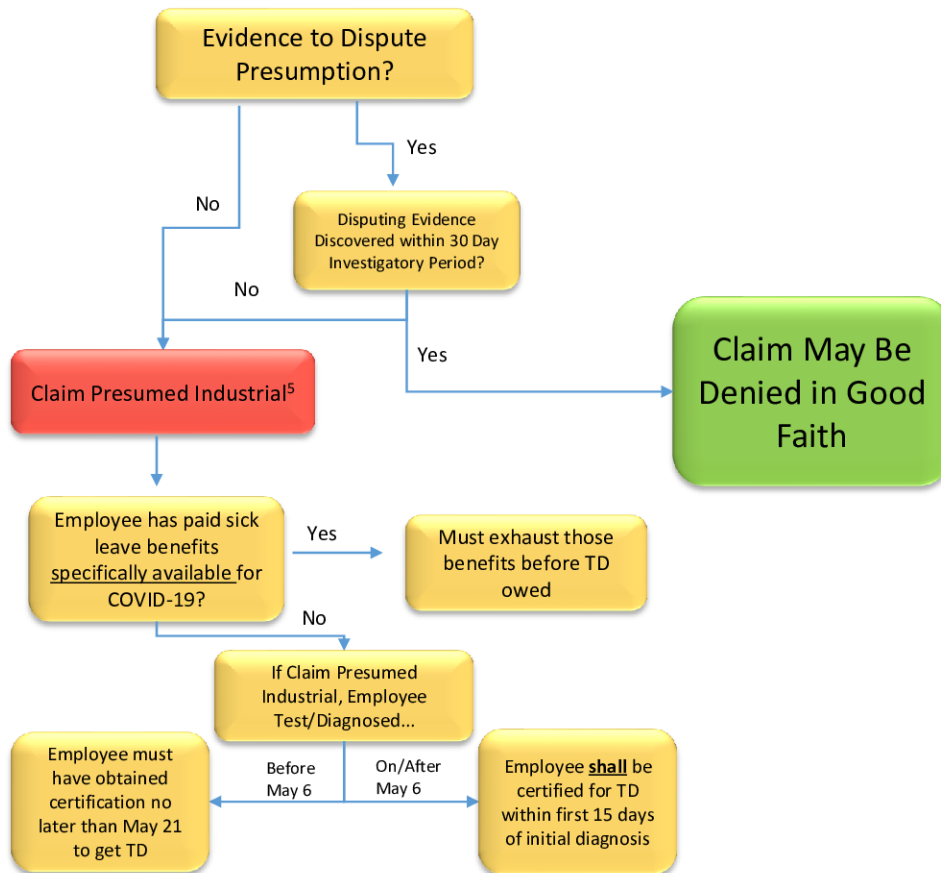


© October 2020 Laughlin, Falbo, Levy & Moresi LLP

TABLE VI cont'd



Chart 2 – Labor Code § 3212.86



© October 2020 Laughlin, Falbo, Levy & Moresi LLP

Chart 3 – Labor Code § 3212.87

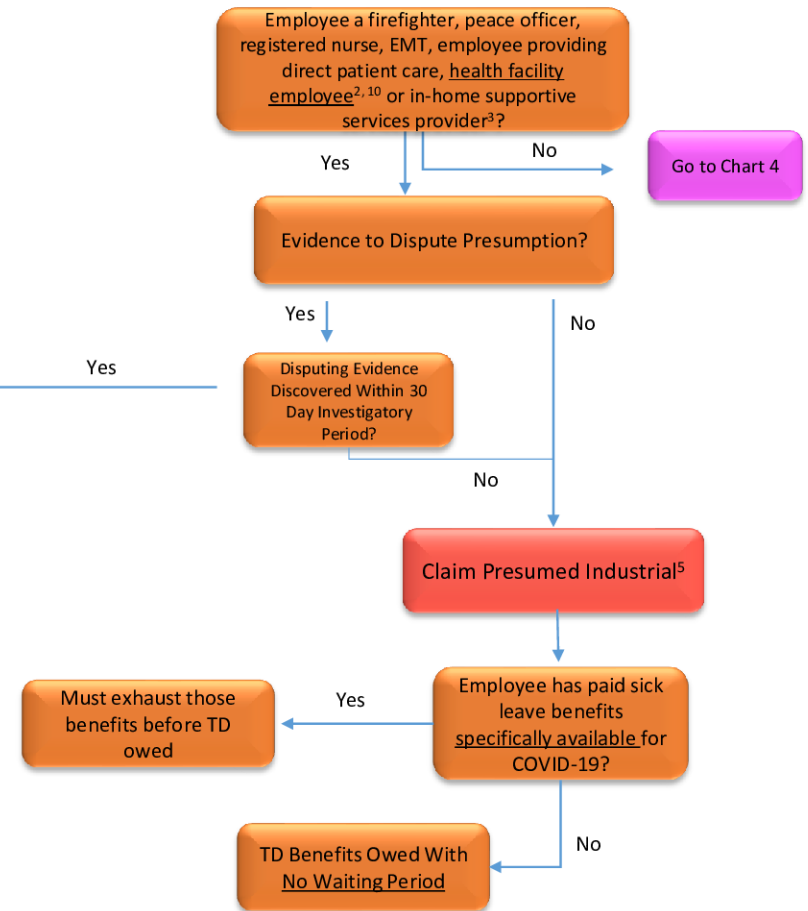
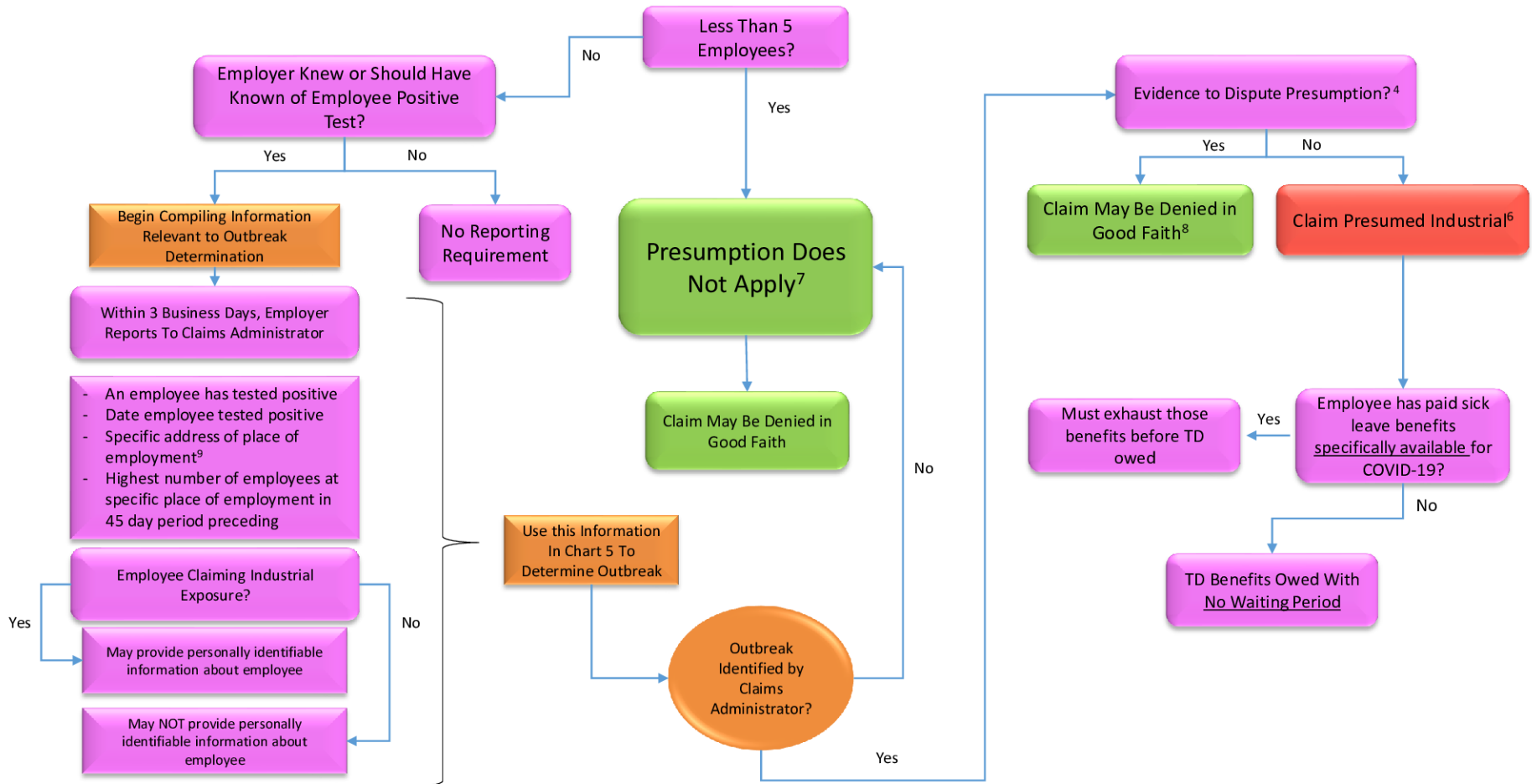


TABLE VI cont'd

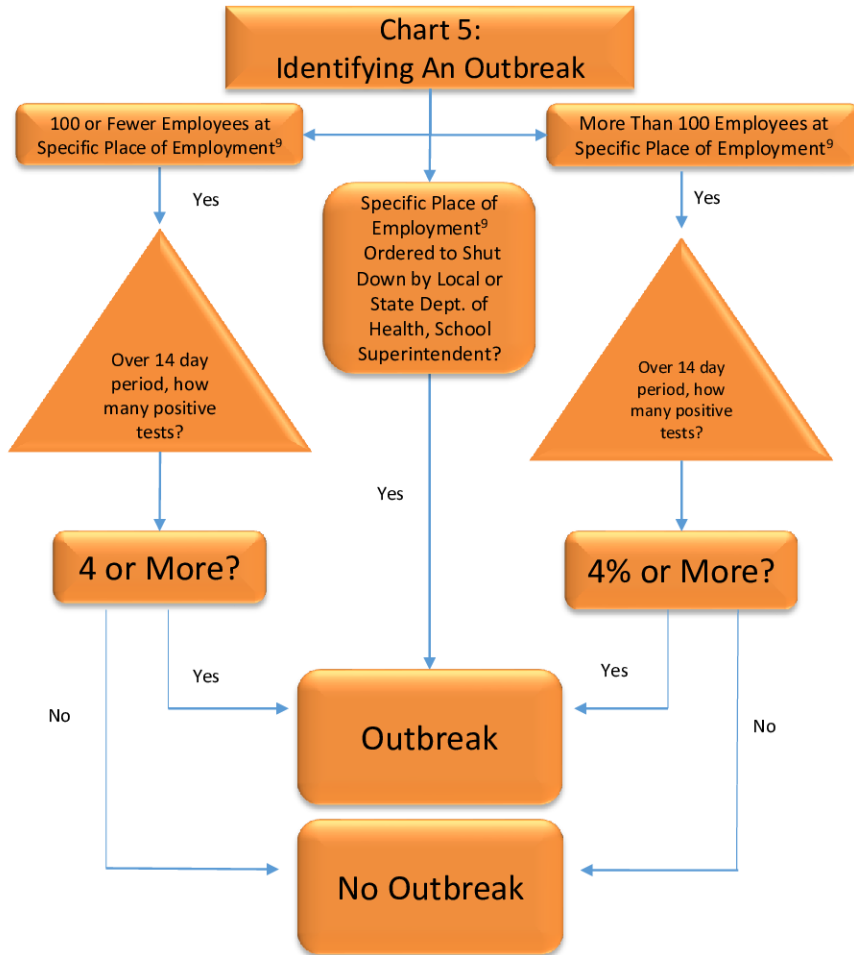


Chart 4 – Labor Code § 3212.88



© October 2020 Laughlin, Falbo, Levy & Moresi LLP

TABLE VI cont'd



© October 2020 Laughlin, Falbo, Levy & Moresi LLP

Footnotes: Additional Information

1. Test → PCR (Polymerase Chain Reaction) approved by USFDA. Serologic testing permitted only for claims falling under LC §3212.86. May include any other viral culture test approved for emergency use by USFDA
2. Health Facility generally defined as one providing 24 hour care. For more specific definitions see Health and Safety Code Section 1250 (a), (b), (c), (m), (n)
3. In-home supportive services defined Under Article 7, Chapter 3 Part 3 Division 9, or 14132.95, 14132.952, 14132.956 of Welfare Institutions Code, and performed outside their own home or residence.
4. Evidence relevant to controverting presumption may include "evidence of measures in place to reduce potential transmission, and evidence of employee's non-occupational risks of COVID-19 infection."
5. If claim presumed industrial, benefits include full hospital, surgical, medical treatment, disability indemnity, and death benefits. DIR waives right to collect any death benefit. If case presumed industrial, daim may only be rebutted by evidence discovered after initial 30 day investigatory period
6. If claim presumed industrial, benefits include full hospital, surgical, medical treatment, disability indemnity, and death benefits. DIR waives right to collect any death benefit. If case presumed industrial, daim may only be rebutted by evidence discovered after initial 45 day investigatory period.
7. While the presumption may not apply, the daim may still be industrial upon showing that employment placed applicant at increased risk for infection on preponderance of the evidence.
8. Labor Code Section 3212.87 states that in these specific cases where the presumption does not apply, the claim "shall be evaluated pursuant to Sections 3202.5 and 3600."
9. Specific Place of Employment, as used throughout the statutes, means "the building, store, facility, or agricultural field where an employee performs work at the employer's direction." When performing the "outbreak" determination, each specific location the applicant worked must be considered, and if an outbreak exists at any of the places of employment, that location shall be considered the "specific place of employment"
10. Labor Code 3212.87(a)(10): The presumption does not apply to a health facility employee who does not provide direct patient care, and who does not have contact with a health facility patient within the last 14 days who tested positive.